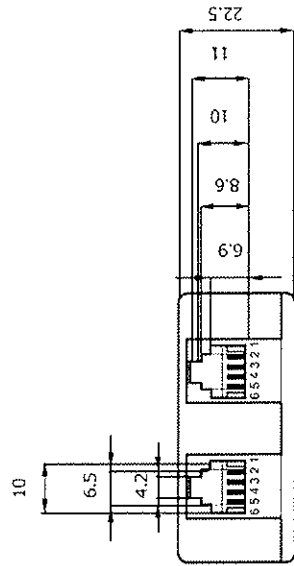
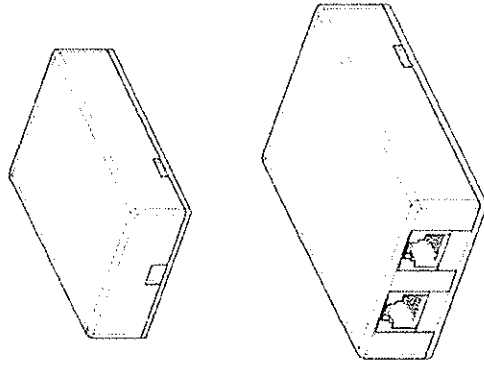
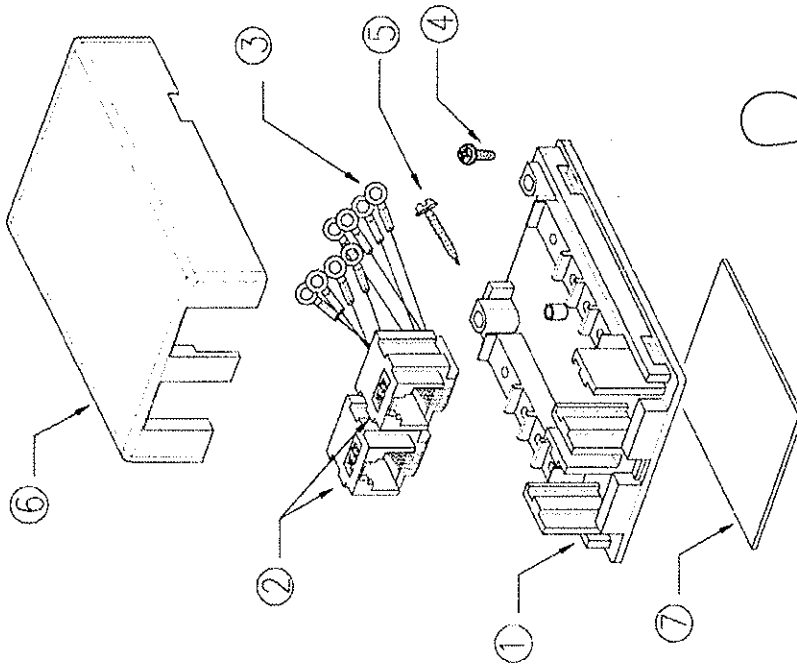
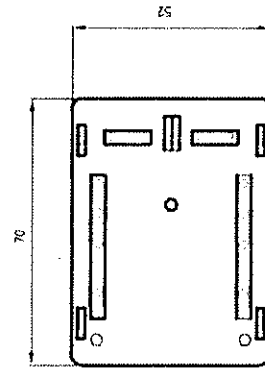


A B C D E F G H

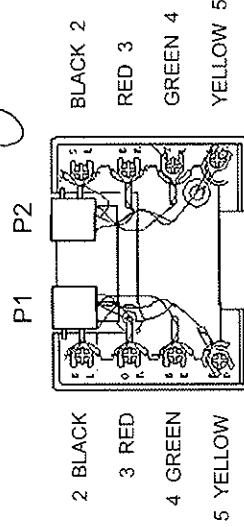


P1/P2
 2 BLACK
 3 RED
 4 GREEN
 5 YELLOW



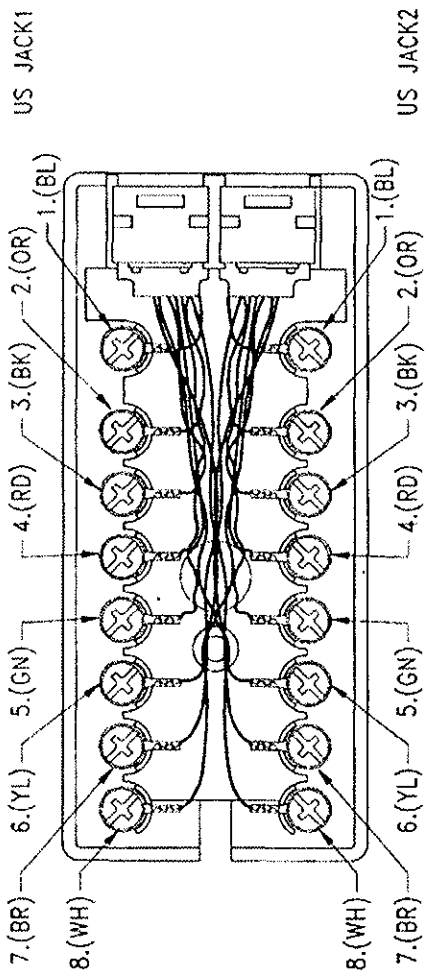
2011-01-03

Wiring diagram:

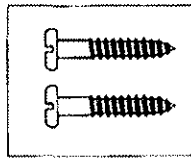
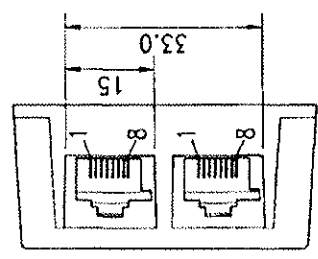


AC Item TD2704		2xRJ11 6P4C Modular Surface		
7	PCS	1	Double-side tape	L x W x H 50 x 40 x 1.2mm
6	PCS	1	Top housing	Material : ABS white
5	PCS	1	Screw	Material : 3.5 x 20mm Nickel-plated steel
4	PCS	8	Screw	Material : 3.5 x 5.5mm Nickel-plated steel
3	PCS	8		30" gold-plated connector 26 Awg stranded cable UL 1061
2	PCS	2		Material : ABS
1	PCS	1	Bottom housing	Material : ABS white

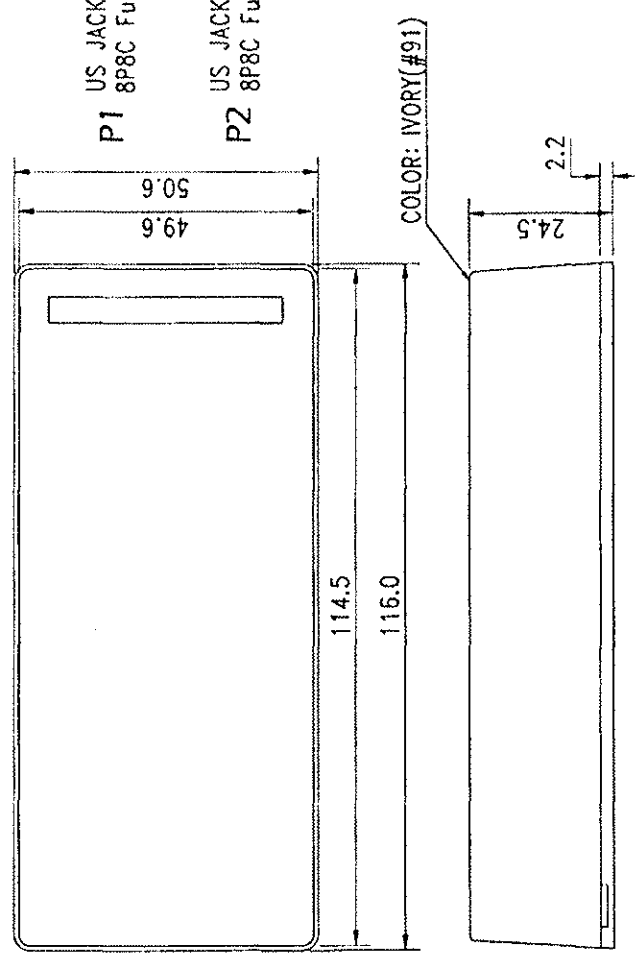
- P1 / P2
 1 - BLUE
 2 - ORANGE
 3 - BLACK
 4 - RED
 5 - GREEN
 6 - YELLOW
 7 - BROWN
 8 - WHITE



808 INSERT



B6*20 SCREW
 PHILIPS SLOT TYPE



NOTE:
 THE DOUBLE TAPE SPECIFICATION: 47*100 MM.

AL

Item TD2708

DESCRIPTION: RJ45(8P8C) SURFACE JACK (DUPLEX JACK)

SCALE	N/A	DATE	10.08.18	CHECKED		ISSUE: A	SHEET 1 OF 1	TOLERANCES UNLESS OTHERWISE STATED X.X = ± 1 .XX = ± 0.2
SIZE	A4	DRAWN	Green	APPROVED				
UNIT	mm	AFFIRM		STANDARDIZE			CUSTOMER:	