

### Bullets

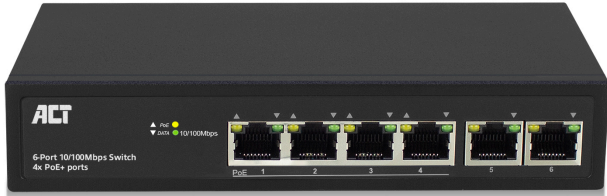
- 6x 10/100Mbps Auto-negotiation Fast Ethernet RJ-45ports with 4 ports PoE+ function
- Max PoE power : 30W for each PoE port, 60W total
- PoE Power : Power+: pin 1 & pin 2, Power-: pin 3 & pin 6
- Supports IIEEE 802.3, IEEE 802.3u, IEEE 802.3x, IEEE 802.3af, IEEE 802.3at, IEEE802.3az
- Built-in power, LED indicators for monitoring link, activity, PoE
- Fanless design with integrated power supply; detachable power cable

### Technical specs

LAN speed	: 10/100 Mbps
Layer functions	: Layer 2 (unmanaged)
Power max.	: 60 W
Power of Ethernet (PoE) max	: 30W each port
Dimensions	: 16,8 x 9,4 x 3,2 (L x W x H) cm
Power supply	: Built-in power supply
Included	: Detachable power cable
RJ45 ports	: 6
PoE+ ports	: 4
10/100 Mbps ports	: 6

### Story

Expand your available network connection with the ACT AC4430 PoE (Power over Ethernet) Switch. The AC4430 is a 6-port 10/100Mbps switch with 4 PoE+ ports. The PoE+ ports can handle up to 30W each with a total of 60W. The switch supports PoE IEEE 802.3af, IEEE 802.3at compliant Powered Device (PD). It has a fanless design, internal power supply and detachable power cable. The LED indicators on the switch are monitoring power, link, activity and PoE.



**PoE+**  
4x PoE+ Ports  
60W Max PoE Power  
30W Max per port

**Fanless**  
Fanless Design

**Built-in**  
Power Supply



SKU	EAN	SHORT PRINT DESCRIPTION
AC4430	8716065409239	Number of ports: 6 x 10/100 Mbps PoE+ Auto-Negotiation

reliable and open