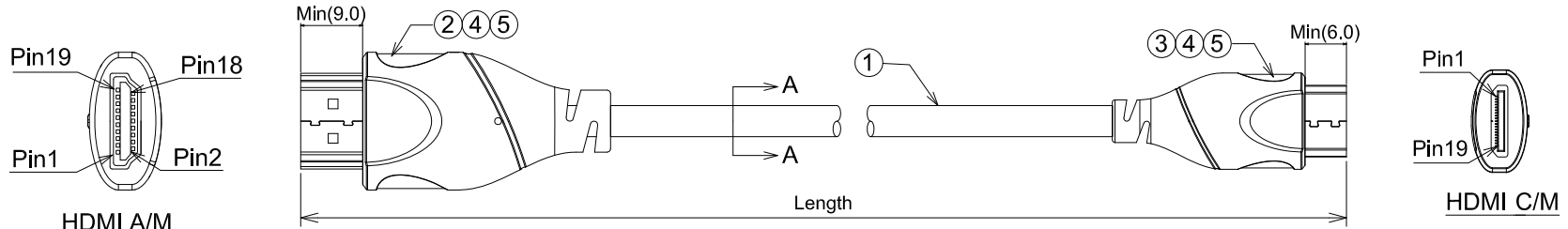
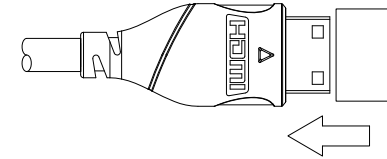
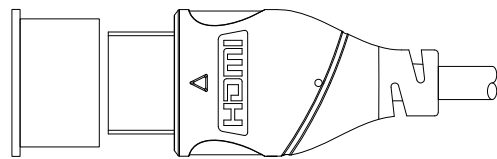


MOLDING	
INNER MOLD	JAM875/JAM1094
OUTER MOLD	JAM876/JAM911

DATE	REV.	REVISION	DRAFTING	CHECKED
2015.01.12	1.0	NEW	HT	CQ

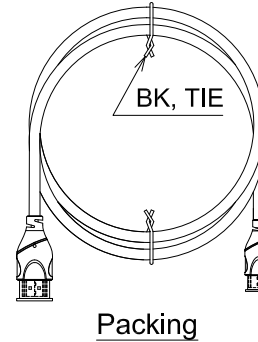
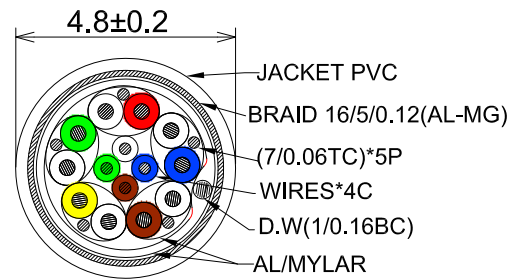


Item No.	length(m)	D(mm)
AK3670	0.5M	3.8±0.2
AK3671	1.0M	3.8±0.2
AK3673	2.0M	3.8±0.2



PIN ASSIGNMENT:

A/M	C/M	Signal Name
1	2	TMDS Data2+
3	3	TMDS Data2-
2	1	TMDS Data2 Shield
4	5	TMDS Data1+
6	6	TMDS Data1-
5	4	TMDS Data1 Shield
7	8	TMDS Data0+
9	9	TMDS Data0-
8	7	TMDS Data0 Shield
10	11	TMDS Clock+
12	12	TMDS Clock-
11	10	TMDS Clock Shield
13	14	CEC
14	17	UTILITY
19	19	HOT PLUG DETECT
17	13	DDC/CEC Ground
15	15	SCL
16	16	SDA
18	18	+5V Power
Shell	Shell	Ground



- NOTES:**
- TESTING CONDITION :
100% OPEN/SHORT/MISS WIRE TESTING
INSULATION RESISTANCE: DC/250V, 10MΩ Min, 0.01S
WITHSTAND VOLTAGE: AC/250V 5mA FOR 0.01S.
CONDUCTOR RESISTANCE: 5Ω Max.
 - All Material Meet The RoHS Compliant.

5	PVC	OVER MOLDING:45P Black PVC	A/R
4	PE	INNER MOLDING : MG70 LDPE Transparent	A/R
3	HDMI C/M	HDMI C/M, Contact G/F, Black Insulation, Gold Plated Shell With Clips	1 set
2	HDMI A/M	HDMI A/M, Contact G/F, Black Insulation, Gold Plated Shell With Clips	1 set
1	CABLE	High Speed HDMI Cable [34AWG (7/0.06TC)*1P+AM+D(7/0.06TC)]*5P+34AWG (7/0.06TC)*4C +Drain(1/0.16BC) +Braid(AL-Mg) Black PVC Jacket, OD:4.8mm	A/R
No.	TITLE	DESCRIPTION	Q'TY

Unless specified on the drawing, tolerances are per the follows:

X.	±0.20	X°	±3
.X	±0.10	.X°	±0.3
.XX	±0.05		

		DRAW. NO			TITLE	HDMI A/M TO C/M AWG34 CABLE ASS'Y			
		CUSTOMER			DRAW	HT	DATE	2015.01.12	
		CUST'R P/N	/		CHECK	Mike	DATE	2015.01.12	
		SCALE	NONE		APPROVED	CQ	SHEET	1 OF 1	

Material	Part Number	Note	***	3RD	UNIT	mm
----------	-------------	------	-----	-----	------	----