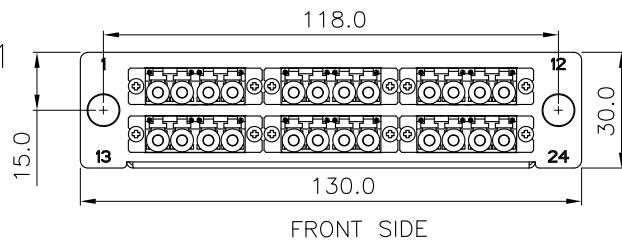


SCALE 1/1

SCALE 2/1



LC	Straight Version	MTP	LC	Straight Version	MTP
1	←→	1	13	←→	13
2	←→	2	14	←→	14
3	←→	3	15	←→	15
4	←→	4	16	←→	16
5	←→	5	17	←→	17
6	←→	6	18	←→	18
7	←→	7	19	←→	19
8	←→	8	20	←→	20
9	←→	9	21	←→	21
10	←→	10	22	←→	22
11	←→	11	23	←→	23
12	←→	12	24	←→	24

Specification :

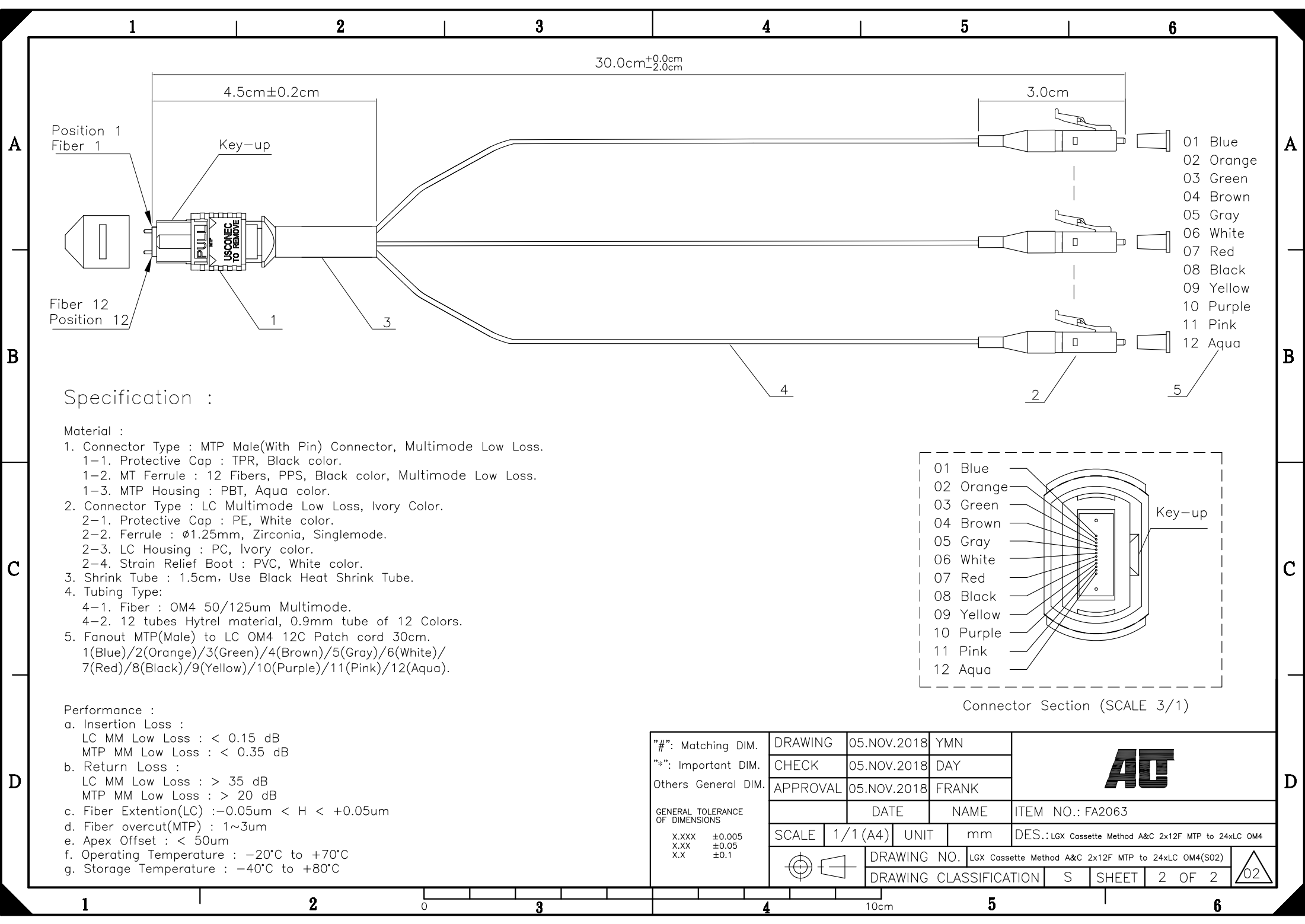
Adaptor	Type	Color
MTP	SC Footprint A Type(Up to Down)	Black
LC	Zirconia	Violet

Direct Harness (12C)	Type
	OM4, 0.9mm Jacket, PVC, 12F MTP+Guide Pin, LC(MM), Low Loss

LC Fiber Number	Jacket Color	Fiber Position	MTP Fiber Number	LC Fiber Number	Jacket Color	Fiber Position	MTP Fiber Number
Fiber 1	Blue	B	Fiber 1	Fiber 13	Blue	B	Fiber 13
Fiber 2	Orange	A	Fiber 2	Fiber 14	Orange	A	Fiber 14
Fiber 3	Green	B	Fiber 3	Fiber 15	Green	B	Fiber 15
Fiber 4	Brown	A	Fiber 4	Fiber 16	Brown	A	Fiber 16
Fiber 5	Gray	B	Fiber 5	Fiber 17	Gray	B	Fiber 17
Fiber 6	White	A	Fiber 6	Fiber 18	White	A	Fiber 18
Fiber 7	Red	B	Fiber 7	Fiber 19	Red	B	Fiber 19
Fiber 8	Black	A	Fiber 8	Fiber 20	Black	A	Fiber 20
Fiber 9	Yellow	B	Fiber 9	Fiber 21	Yellow	B	Fiber 21
Fiber 10	Purple	A	Fiber 10	Fiber 22	Purple	A	Fiber 22
Fiber 11	Pink	B	Fiber 11	Fiber 23	Pink	B	Fiber 23
Fiber 12	Aqua	A	Fiber 12	Fiber 24	Aqua	A	Fiber 24

- a. Dimension: 1.18" x 2.95" x 5.12" (30.0 x 75.0 x 130.0mm)
- b. Weight: 0.23kg.
- c. Surface Finished: Painted, BK(RAL9005)

"#" : Matching DIM. "*" : Important DIM. Others General DIM.	DRAWING	05.NOV.2018	YMN		
	CHECK	05.NOV.2018	DAY		
	APPROVAL	05.NOV.2018	FRANK		
GENERAL TOLERANCE OF DIMENSIONS X.XXX ±0.005 X.XX ±0.05 X.X ±0.1	DATE	NAME	ITEM NO.: FA2063		
	SCALE	1/1 (A4)	UNIT		mm
	DRAWING NO. LGX Cassette Method A&C 2x12F MTP to 24xLC OM4(S02)		DES.: LGX Cassette Method A&C 2x12F MTP to 24xLC OM4(S02)		
DRAWING CLASSIFICATION		S	SHEET	1 OF 2	



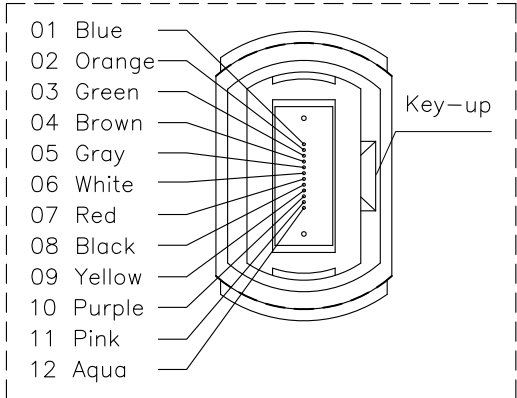
Specification :

Material :

1. Connector Type : MTP Male(With Pin) Connector, Multimode Low Loss.
 - 1-1. Protective Cap : TPR, Black color.
 - 1-2. MT Ferrule : 12 Fibers, PPS, Black color, Multimode Low Loss.
 - 1-3. MTP Housing : PBT, Aqua color.
2. Connector Type : LC Multimode Low Loss, Ivory Color.
 - 2-1. Protective Cap : PE, White color.
 - 2-2. Ferrule : $\varnothing 1.25\text{mm}$, Zirconia, Singlemode.
 - 2-3. LC Housing : PC, Ivory color.
 - 2-4. Strain Relief Boot : PVC, White color.
3. Shrink Tube : 1.5cm, Use Black Heat Shrink Tube.
4. Tubing Type:
 - 4-1. Fiber : OM4 50/125um Multimode.
 - 4-2. 12 tubes Hytel material, 0.9mm tube of 12 Colors.
5. Fanout MTP(Male) to LC OM4 12C Patch cord 30cm.
 - 1(Blue)/2(Orange)/3(Green)/4(Brown)/5(Gray)/6(White)/7(Red)/8(Black)/9(Yellow)/10(Purple)/11(Pink)/12(Aqua).

Performance :

- a. Insertion Loss :
 - LC MM Low Loss : $< 0.15 \text{ dB}$
 - MTP MM Low Loss : $< 0.35 \text{ dB}$
- b. Return Loss :
 - LC MM Low Loss : $> 35 \text{ dB}$
 - MTP MM Low Loss : $> 20 \text{ dB}$
- c. Fiber Extention(LC) : $-0.05\mu\text{m} < H < +0.05\mu\text{m}$
- d. Fiber overcut(MTP) : 1~3um
- e. Apex Offset : $< 50\mu\text{m}$
- f. Operating Temperature : -20°C to $+70^{\circ}\text{C}$
- g. Storage Temperature : -40°C to $+80^{\circ}\text{C}$



Connector Section (SCALE 3/1)

"#": Matching DIM. "*": Important DIM. Others General DIM.	DRAWING	05.NOV.2018	YMN	
	CHECK	05.NOV.2018	DAY	
	APPROVAL	05.NOV.2018	FRANK	
GENERAL TOLERANCE OF DIMENSIONS X.XXX ±0.005 X.XX ±0.05 X.X ±0.1	DATE	NAME	ITEM NO.: FA2063	
	SCALE	1/1 (A4)	UNIT	mm
	DRAWING NO.	LGX Cassette Method A&C 2x12F MTP to 24xLC OM4(S02)		
	DRAWING CLASSIFICATION	S	SHEET 2 OF 2	