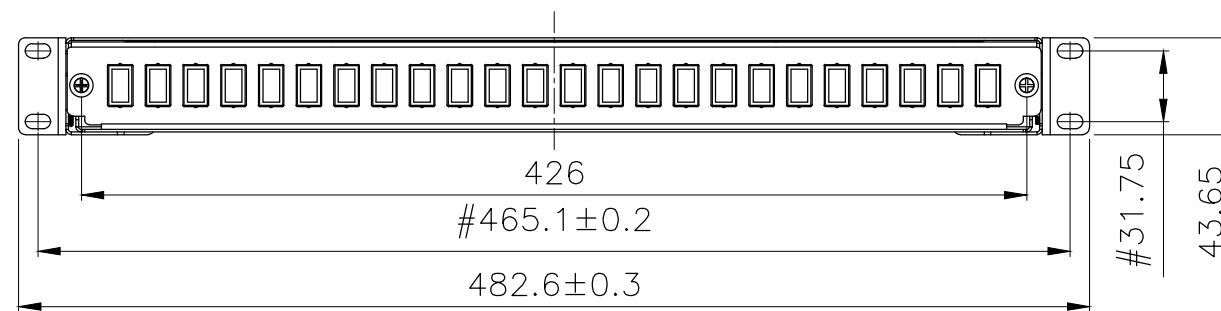
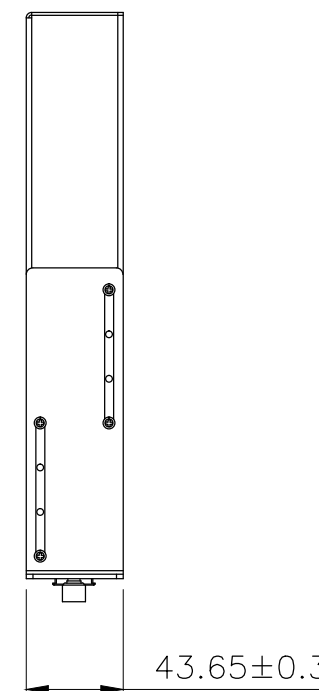
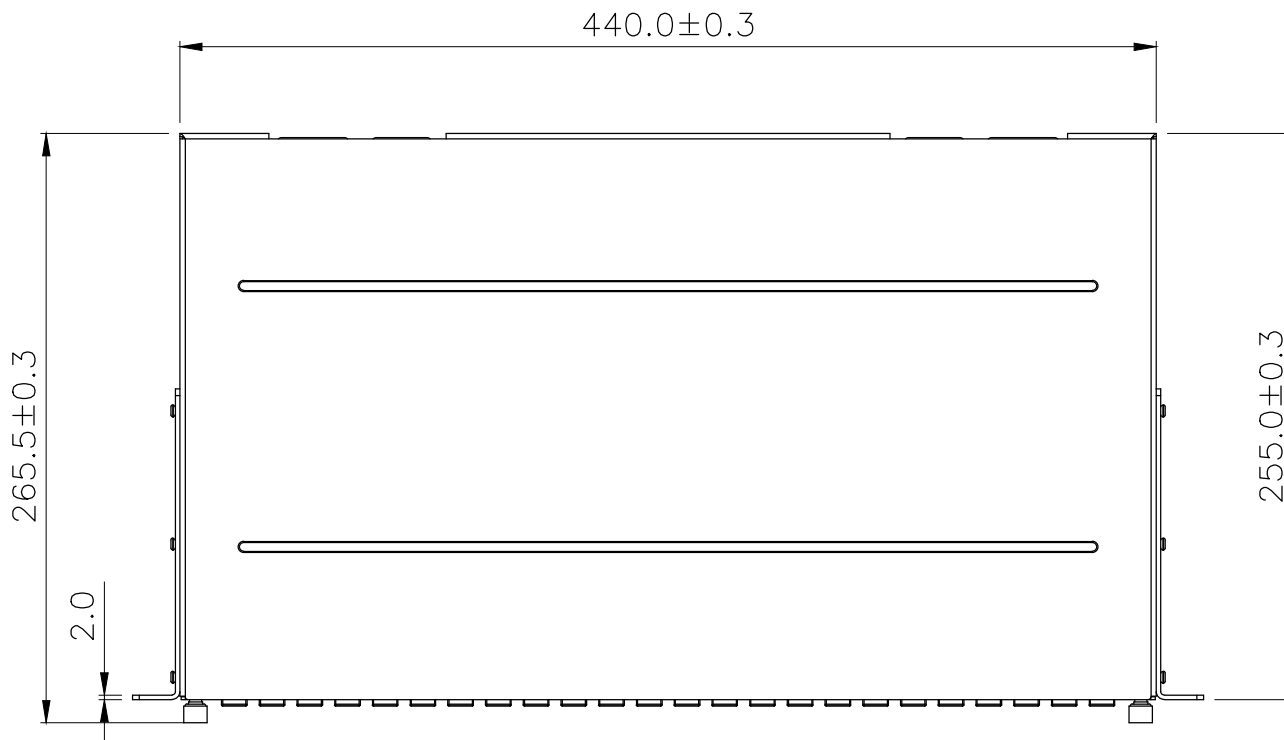
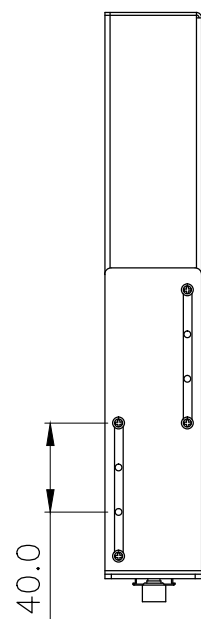
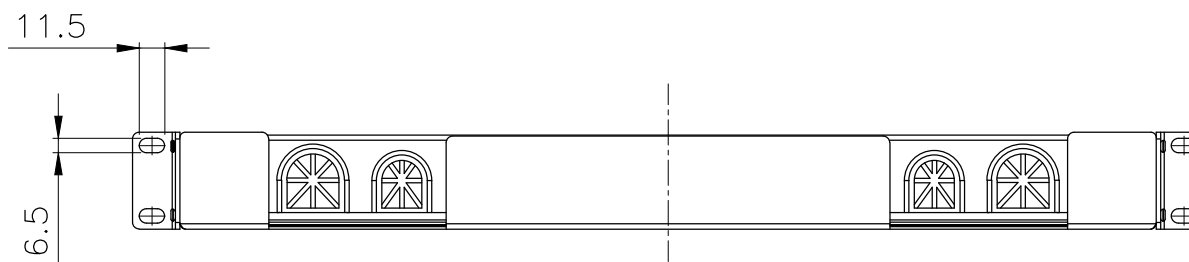


SCALE 1/10



Accessory :

1. 20mm Cable gland: 2 pieces.

Specification :

Material :

1. Panel : Material : SPCC, 1.2mm Thickness, BK(RAL9005)
2. Adaptor Blanking Insert LC Duplex: 24 pieces, ABS, UL 94V-HB, Black color.
3. Splice cassette: 2 pieces.
4. fiber management spool: 2 sets.

Performance :

- a. Height : 1U(43.65mm) Width : 19"(482.6mm) Depth : 10"(255.0mm)
- b. Shelf Mounting Adjustment Range : 0~245.0mm
- c. Net Weight : 4.5kg

"#": Matching DIM. "*": Important DIM. Others General DIM.  GENERAL TOLERANCE OF DIMENSIONS X.XXX ±0.005 X.XX ±0.05 X.X ±0.1	DRAWING	21.JUL.2017	DANIEL	
	CHECK	21.JUL.2017	DAY	
	APPROVAL	21.JUL.2017	JAIMY	
		DATE	NAME	ITEM NO.: FA2044
	SCALE	1/5 (A4)	UNIT	mm
				DES.: Fiber panel 24 x duplex LC Blanks+Unloaded
		DRAWING NO.	Fiber panel 24 x duplex LC Blanks+Unloaded(S01)	
		DRAWING CLASSIFICATION	S	SHEET 1 OF 1

