



Multilingual

User Manual

▪ [nl](#) ▪ [en](#) ▪ [fr](#) ▪ [es](#) ▪ [pt](#) ▪ [it](#) ▪ [de](#) ▪ [hu](#)



AC7900/AC7910
KVM Switch met USB en Audio

nl

Handleiding

AC7900/AC7910 | KVM Switch met USB en Audio

Inhoudsopgave

1.0	Introductie	2
1.1	Inhoud van de verpakking.....	2
2.0	KVM-switch met USB en Audio/Mic.....	3
3.0	Installatie.....	3
3.1	Schakelen tussen computers.....	4
3.2	Software.....	4
3.3	Windows-installatie	4
3.4	Mac-installatie	4
4.0	Bediening	4
4.1	Schakelknop	4
4.2	KVM-schakelsoftware Windows	6
4.3	KVM-schakelsoftware MAC	7
4.4	Sneltoetsen op het toetsenbord.....	7
5.0	Beknopt referentieblad.....	8
6.0	Veel gestelde vragen en andere relevante informatie	9
7.0	Service en ondersteuning	9
8.0	Waarschuwingen en aandachtspunten.....	9
9.0	Garantievoorwaarden	11

1.0 Introductie

Gefeliciteerd met de aankoop van dit hoogwaardige ACT product! Dit product is door de technische experts van ACT uitgebreid getest. Mocht dit product ondanks alle zorg problemen vertonen, dan kun je een beroep doen op de ACT garantie. Bewaar deze handleiding samen met het bewijs van aankoop daarom zorgvuldig.

Registreer je aankoop nu op www.act-connectivity.com en ontvang product updates!

1.1 Inhoud van de verpakking

De volgende onderdelen zijn aanwezig in het pakket:

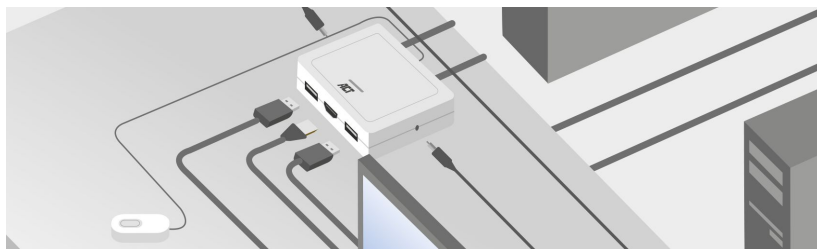
- AC7900/AC7910 KVM Switch met USB en Audio
- Snelle Installatie Gids

2.0 KVM-switch met USB en Audio/Mic

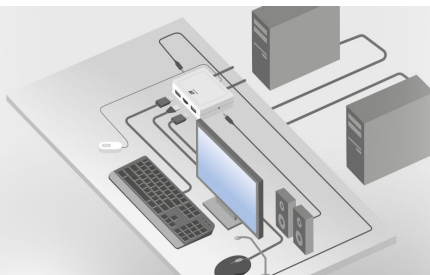
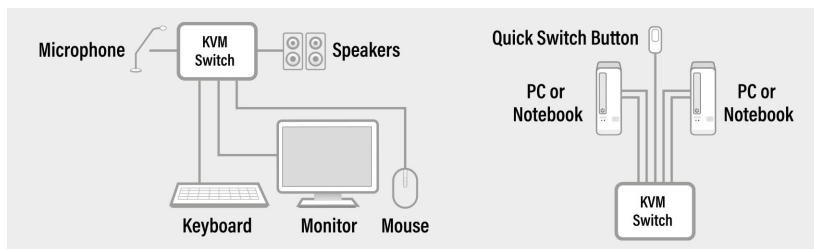
De AC7900 / AC7910 is een 2-poorts KVM-switch met USB en audio / microfoon. Het is uitgerust met 2 vaste kabelsets van USB KVM & Audio / Mic combokabels. Er is ook een bedrade schakelknop beschikbaar om eenvoudig tussen twee computers te schakelen. Hiermee hebt u toegang tot en kunt u twee USB-compatibele computers bedienen met slechts één USB-toetsenbord, muis, beeldscherm, luidsprekerset en microfoon.

3.0 Installatie

Sluit uw HDMI / DisplayPort-monitor, toetsenbord, muis, luidsprekers en microfoon aan op de beschikbare poorten op de KVM-switch.



Sluit de aangesloten HDMI / DisplayPort-, USB- en audiokabels aan op uw pc / notebooks.



3.1 Schakelen tussen computers

Om gemakkelijk en snel tussen twee computers te schakelen, kunt u de schakelknop, de schakelsoftware die op uw pc / notebook is geïnstalleerd of de sneltoetsen op het toetsenbord gebruiken.

3.2 Software

Voor computers met Windows / Mac-besturingssystemen kunt u de KVM-switch ook omschakelen met de beschikbare software van de ACT-website www.act-connectivity.com.

3.3 Windows-installatie

- Download de Windows-software van de ACT-website www.act-connectivity.com.
- Pak het gedownloade zip-bestand uit
- Installeer de software op uw pc / notebook door op 2port_USBKVMInstall.exe te klikken

3.4 Mac-installatie

- Download de Mac-software van de ACT-website www.act-connectivity.com.
- Pak het gedownloade zip-bestand uit
- Installeer de software op uw Mac / Macbook door op USBKVM Switcher 2 ports.pkg te klikken

Opmerking: de Mac-versie van de KVM-schakelsoftware ondersteunt alleen Mac OS 10.4 (Tiger) en hoger. Eerdere versies van Mac OS werken er mogelijk niet goed mee.

Opmerking: de KVM-schakelsoftware ondersteunt zowel de Windows- als de Mac OS-besturingssystemen. Voor andere OS-platforms zoals Linux, kunt u nog steeds de universele sneltoets op het toetsenbord gebruiken - Scroll Lock + Scroll Lock om van computer te wisselen.

Deze sneltoets is echter niet beschikbaar voor Mac OS.

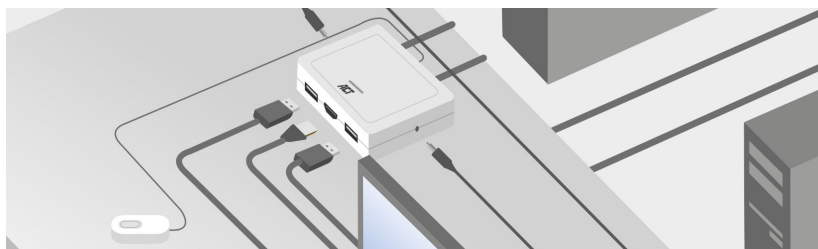
4.0 Bediening

Er zijn drie methoden om uw KVM-switch te bedienen voor computer- en audio- / microfoonpoortselectie: met de schakelknop (een bekabelde afstandsbediening), KVM-schakelsoftware of sneltoetsen op het toetsenbord.

4.1 Schakelknop

Schakelknop (een bedrade afstandsbediening)

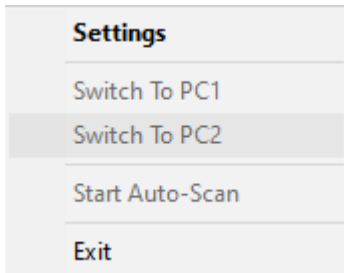
De Switch-knop is een bedrade afstandsbediening waarmee je direct kunt schakelen. Druk gewoon op de knop om tussen twee computers te schakelen.



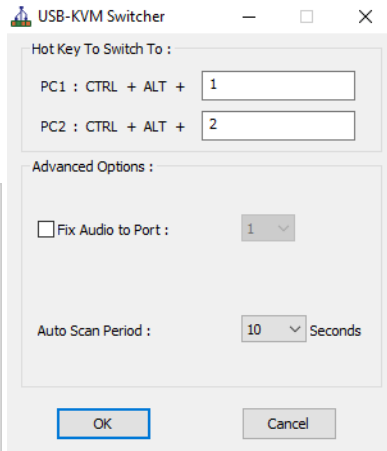
4.2 KVM-schakelsoftware Windows

KVM-schakelsoftware (Windows-platform)

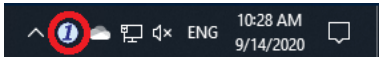
Raadpleeg het "[Beknopt referentieblad](#)" voor de bediening van de KVM-schakelsoftware.



Windows: Bedieningsmenu



Configuratie van het bedieningsmenu



Geen live verbinding gedetecteerd



Het huidige actieve computerkanaal is op poort 1

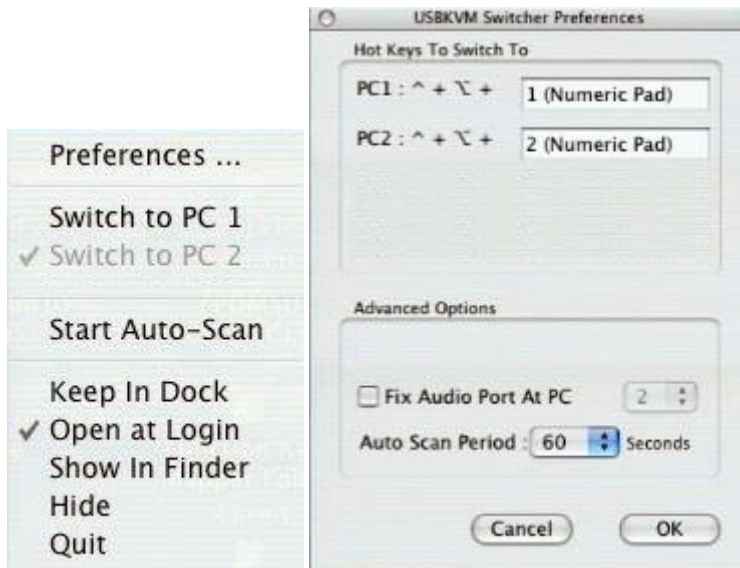


Het huidige actieve computerkanaal is op poort 2

4.3 KVM-schakelsoftware MAC

KVM-schakelsoftware (Mac-platform)

Raadpleeg het "[Beknopt referentieblad](#)" voor de bediening van de KVM-schakelsoftware.



Mac: Bedieningsmenu

Configuratie bedieningsmenu



Geen live verbinding gedetecteerd



Het huidige actieve computerkanaal is op poort 1



Het huidige actieve computerkanaal is op poort 2

4.4 Sneltoetsen op het toetsenbord

Toetsenbord sneltoetsen

Raadpleeg het "[Beknopt referentieblad](#)" voor de bediening van de sneltoets via het toetsenbord.

5.0 Beknopt referentieblad

Quick Switch Button Commands		Keyboard Hotkeys Commands	
Command	Quick Switch Button	Command	Keyboard Hotkeys
Select PC Port	Press the button to toggle between the two computers.	Select PC Port	Press 2 times Scroll Lock Each keystroke in hotkey sequence should be pressed within two seconds. Otherwise, the hotkey sequence will not be validated.
Switching Software Commands			
Command	Switching Software	Description	Description
Select PC Port	Right-click the KVM Switching Software icon to evoke the operation menu, then select whichever computer that is available for switching.	Select PC port	Select PC port
Next lower PC Port	Right-click the KVM Switching icon to evoke the operation menu, then select whichever computer that is available for switching.	Next lower PC port	Next lower PC port
Next higher PC Port	Right-click the KVM Switching icon to evoke the operation menu, then select whichever computer that is available for switching.	Next lower PC port	Next lower PC port
Define Hotkey Preceding Sequence	Right-click the KVM Switching icon to evoke the operation menu, and then select Settings (Windows) / Configuration Dialog Box (Mac OS).	User-definable hotkeys sequence for computer selection is "Ctrl +Alt+ [command key]". For Mac, instead of Scroll Lock key, you may use Userdefinable hotkey sequence to switch.	
Autoscan	Right-click the KVM Switching Software icon to evoke the operation menu, then select Start Auto-Scan to activate auto-scanning.	Starts Autoscan	
Autoscan with Programmable Delay Time	Right-click the KVM Switching Software icon to evoke the operation menu, then select a range of Auto-Scan Period.	Autoscan duration adjust to (10 – 60 seconds)	
Stop Autoscan	While auto-scanning, right-click the KVM Switching Software icon to evoke the operation menu, and then select Stop Auto-Scan to deactivate auto-scanning.	Stop Autoscan during scan mode	
Beeper	Right-click the KVM Switching Software icon to evoke the operation menu, then check the box "Turn on Buzzer".	Toggle Beeper on/off	
Keep in Dock (Mac only)	Right-click the KVM Switching Software icon to evoke the operation menu, and then select "Keep in Dock".	KVM switching icon will be on the system tray of your desktop	
Open at Login (Mac only)	Right-click the KVM Switching Software icon to evoke the operation menu, then select "Open at login".	Operate Switcher Software and login	
Fix Audio Port	Right-click the KVM Switching Software icon to evoke the operation menu, then check the box "Fix Audio Port at PC" and select the desired PC port.	Check this option and then select the computer to fix the audio/mic port to the selected computer. Once this option is checked, the audio/mic port will be fixed and become non-switchable.	

6.0 Veel gestelde vragen en andere relevante informatie

Selecteer **support** op de ACT-website om de meest recente veelgestelde vragen over je product te vinden. ACT zal deze pagina's regelmatig updaten om er zeker van te zijn dat je over de meest recente informatie beschikt.

Kijk op www.act-connectivity.com voor meer informatie over uw product.

7.0 Service en ondersteuning

Deze handleiding is door de technische experts van ACT met zorg opgesteld.

Mocht je desondanks problemen ervaren bij de installatie of in het gebruik van je ACT product, kijk dan bij **support** op de website www.act-connectivity.com

8.0 Waarschuwingen en aandachtspunten



Vanwege wet- en regelgeving bepaald door het Europese parlement, kan sommige (draadloze) apparatuur onderhevig zijn aan beperkingen omtrent het gebruik in bepaalde Europese lidstaten. In sommige Europese lidstaten kan het gebruik van deze apparatuur verboden zijn. Neem contact op met je (lokale) overheid voor meer informatie over deze beperkingen.

Volg te allen tijde de instructies in de handleiding*, speciaal wanneer het apparaat betreft wat geassembleerd dient te worden.

Waarschuwing: In de meeste gevallen gaat het om een elektronisch apparaat. Verkeerd of oneigenlijk gebruik van het apparaat kan leiden tot (zware) verwondingen.

Wanneer je het apparaat aansluit op het lichtnet zorg er dan voor dat het niet wordt beschadigd of onder (hoge) druk komt te staan.

Zorg dat het stopcontact dichtbij en gemakkelijk bereikbaar is vanaf het apparaat.

Het repareren van het apparaat dient uitgevoerd te worden door gekwalificeerd ACT personeel. Probeer dit apparaat nooit zelf te repareren. De garantie vervalt per direct indien het apparaat zelf gerepareerd is en/of wanneer het product misbruikt is. Voor uitgebreide garantie voorwaarden, ga naar www.act-connectivity.com

Dit apparaat moet na gebruik op de juiste wijze worden afgedankt. Volg hiervoor de geldende regels voor het verwijderen van elektronische goederen.

Lees de onderstaande veiligheidsinstructies zorgvuldig:

- Gebruik geen externe kracht op de kabels
- Verwijder het apparaat niet uit het stopcontact door aan de stroomkabel te trekken
- Plaats het apparaat niet in de buurt van warmtebronnen
- Houd het apparaat uit de buurt van water of andere vloeistoffen

- Verwijder het apparaat direct uit het stopcontact als je een vreemd geluid, rook of geur waarneemt
- Stop geen scherpe voorwerpen in de ontluuchtingsgaten van het apparaat
- Gebruik geen beschadigde kabels (dit kan mogelijk een elektrische schok veroorzaken)
- Houd het apparaat uit de buurt van kinderen
- Reinig het apparaat met een zachte droge doek
- Houd de stekker en het stopcontact schoon
- Trek de stekker nooit met natte handen uit het stopcontact
- Verwijder de stekker uit het stopcontact wanneer het apparaat voor langere tijd niet wordt gebruikt
- Gebruik het apparaat in een goed geventileerde ruimte.

**Tip: ACT handleidingen worden met de grootste zorgvuldigheid gemaakt. Door nieuwe technische ontwikkelingen kan het echter gebeuren dat een geprinte handleiding niet meer de meest recente informatie bevat. De online handleiding wordt altijd direct geüpdatet met de nieuwste informatie.*

Mocht je een probleem ervaren met de geprinte handleiding, check dan altijd eerst onze website www.act-connectivity.com waar de meest recente handleiding te downloaden is.

*Veelgestelde vragen (FAQ). Raadpleeg de **support** link op onze website www.act-connectivity.com en kijk of je hier de juiste informatie over je product kunt vinden. Het is zeer raadzaam om eerst deze FAQ-sectie te raadplegen. Het antwoord staat vaak hier.*

9.0 Garantievoorwaarden

De garantie geldt voor alle ACT producten. Bij aankoop van een tweedehands ACT product resteert de garantietermijn gemeten vanaf het moment van de aankoop door de eerste eigenaar. De ACT garantieregeling is van toepassing op alle ACT producten en onderdelen onlosmakelijk verbonden met het betreffende product. Voedingen, batterijen, accu's, antennes en alle andere producten niet geïntegreerd in of direct verbonden met het hoofdproduct of producten waarvan redelijkerwijs mag worden aangenomen dat deze een ander slijtagepatroon kennen dan het hoofdproduct, vallen derhalve niet onder de ACT garantieregeling. De garantie vervalt tevens bij onjuist of oneigenlijk gebruik, externe invloeden en/of bij opening van de behuizing van het betreffende product door partijen anders dan ACT. ACT kan gereviseerde materialen gebruiken bij het herstellen of vervangen van uw defecte product. ACT is niet aansprakelijk voor veranderingen in de netwerkinstellingen door internet providers. ACT biedt geen garantie voor het niet functioneren van een netwerkproduct dat veroorzaakt wordt door wijzigingen in de netwerkstructuur en/of protocollen van een internetaanbieder. Tevens kan ACT niet aansprakelijk gesteld worden voor het niet functioneren van web services, apps en andere inhoud van derden die beschikbaar is via producten van ACT.

Als mijn product defect raakt

Mocht je product om andere dan de bovengenoemde oorzaken defect raken: neem dan alstublieft contact op met je verkoper.

The logo for ACT, consisting of the letters 'ACT' in a bold, blue, sans-serif font.

www.act-connectivity.com

Trademarks: all brand names are trademarks and/or registered of their respective holders.

The information contained in this document has been created with the utmost care. No legal rights can be derived from these contents. ACT cannot be held responsible, nor liable for the information contained in this document.





AC7900/AC7910
KVM Switch with USB and Audio

en

Manual

AC7900/AC7910 | KVM Switch with USB and Audio

Table of contents

1.0 Introduction	2
1.1 Packing contents	2
2.0 KVM switch with USB and Audio/Mic	3
3.0 Installation	3
3.1 Switching between computers	4
3.2 Software	4
3.3 Windows Installation	4
3.4 Mac Installation	4
4.0 Operation	4
4.1 Switch Button	5
4.2 KVM Switching Software Windows	6
4.3 KVM Switching Software MAC	7
4.4 Keyboard Hotkeys	7
5.0 Quick Reference Sheet	8
6.0 Frequently Asked Questions and other related information	9
7.0 Service and support	9
8.0 Warning and points of attention	9
9.0 Warranty conditions	11

1.0 Introduction

Congratulations with the purchase of this high-quality ACT product! This product has undergone extensive testing by ACT's technical experts. Should you experience any problems with this product, you are covered by ACT warranty. Please keep this manual and the receipt in a safe place.

Register your product now on www.act-connectivity.com and receive product updates!

1.1 Packing contents

The following parts need to be present in the packing:

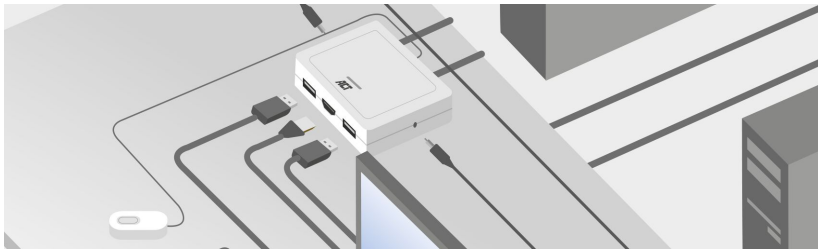
- AC7900/AC7910 KVM Switch with USB and Audio
- Quick Install Guide

2.0 KVM switch with USB and Audio/Mic

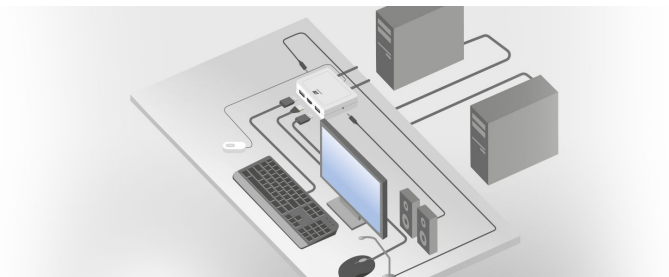
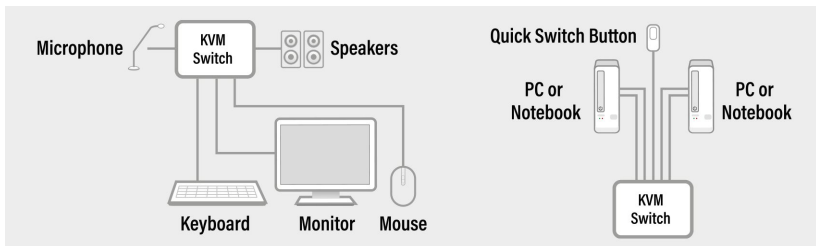
The AC7900/AC7910 is a 2-port KVM switch with USB and audio/Mic. It is equipped with 2 fixed cable sets of USB KVM & Audio/Mic combo cables. Also available is a wired Switch button for switching easily between two computers. It allows you to access, control two USB-enabled computers with only one USB keyboard, mouse, display, speaker set, and microphone.

3.0 Installation

Connect your HDMI/DisplayPort Monitor, keyboard, mouse, speakers and microphone to the available ports on the KVM Switch.



Connect the attached HDMI/DisplayPort, USB and Audio cables to both your PC/notebooks.



3.1 Switching between computers

For easy and fast switching between two computers, you can use the Switch button, the switching software installed on your PC/notebook or the Keyboard shortcuts.

3.2 Software

For computers running Windows/ Mac operating systems, you can also switch the KVM switch using the available software from the ACT website www.act-connectivity.com.

3.3 Windows Installation

- Download the windows software from the ACT website www.act-connectivity.com.
- Unzip the downloaded zip file
- Install the software on your PC/Notebook by clicking 2port_USBKVMInstall.exe

3.4 Mac Installation

- Download the Mac software from the ACT website www.act-connectivity.com.
- Unzip the downloaded zip file
- Install the software on your Mac/Macbook by clicking USBKVM Switcher 2 ports.pkg

Note: The Mac version of the KVM Switching Software supports only Mac OS 10.4 (Tiger) and later. Earlier versions of the Mac OS might or might not work well with it.

Note: The KVM Switching Software supports both the Windows and the Mac OS operating systems. For other OS platforms such as Linux, you can still use the universal keyboard hotkey – Scroll Lock + Scroll Lock to switch computer. However, this switching hotkey is not available for Mac OS.

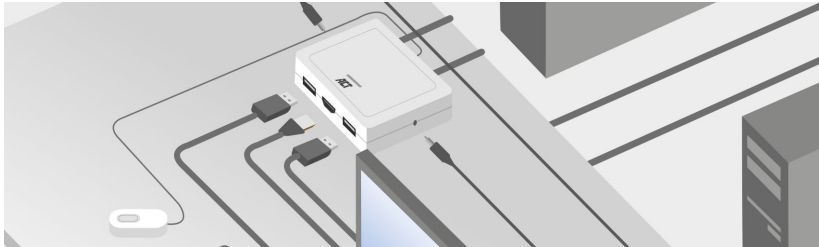
4.0 Operation

There are three methods to control your KVM switch for computer and audio/mic port selection: using Switch Button (a wired remote control), KVM Switching Software, or Keyboard hotkeys.

4.1 Switch Button

Switch Button (a wired remote control)

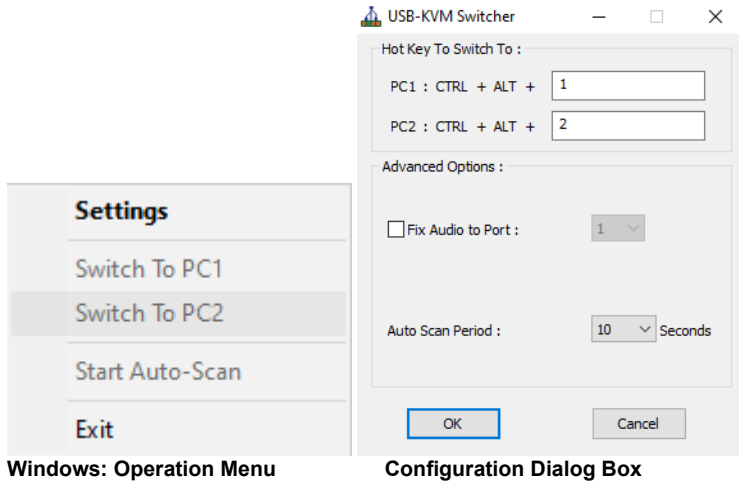
The Switch button is a wired remote control that allows you a direct switching control. Simply press the button to toggle between two computers.



4.2 KVM Switching Software Windows

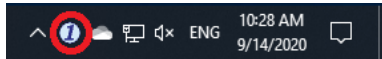
KVM Switching Software (Windows platform)

For KVM Switching Software operation, please refer to the “Quick Reference Sheet”.



Windows: Operation Menu

Configuration Dialog Box



No live connection detected



Current active computer channel is on port 1

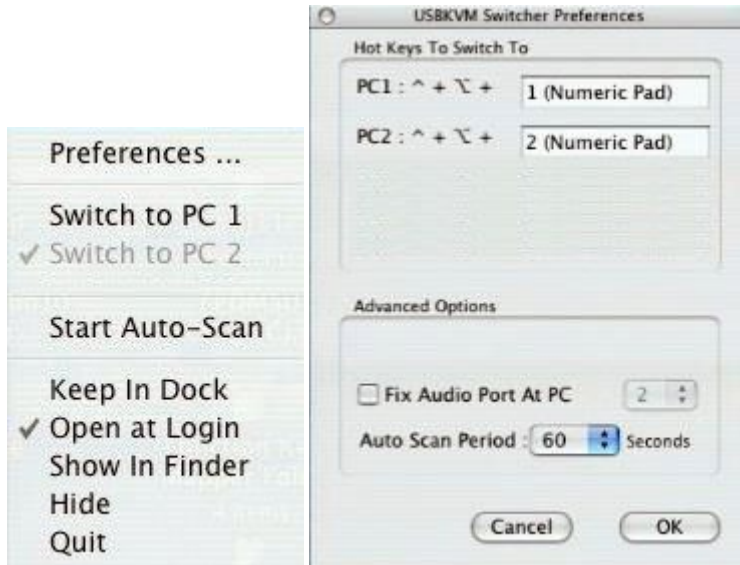


Current active computer channel is on port 2

4.3 KVM Switching Software MAC

KVM Switching Software (Mac platform)

For KVM Switching Software operation, please refer to the “Quick Reference Sheet”.



Mac: Operation Menu

Configuration Dialog Box



No live connection detected



Current active computer channel is on port 1



Current active computer channel is on port 2

4.4 Keyboard Hotkeys

Keyboard Hotkeys

For keyboard hotkey operation, please refer to “Quick Reference Sheet”.

5.0 Quick Reference Sheet

Quick Switch Button Commands		Keyboard Hotkeys Commands	
Command	Quick Switch Button	Command	Keyboard Hotkeys
Select PC Port	Press the button to toggle between the two computers.	Select PC Port	Press 2 times Scroll Lock Each keystroke in hotkey sequence should be pressed within two seconds. Otherwise, the hotkey sequence will not be validated.
Switching Software Commands			
Command	Switching Software	Description	Description
Select PC Port	Right-click the KVM Switching Software icon to evoke the operation menu, then select whichever computer that is available for switching.	Select PC port	Select PC port
Next lower PC Port	Right-click the KVM Switching icon to evoke the operation menu, then select whichever computer that is available for switching.	Next lower PC port	Next lower PC port
Next higher PC Port	Right-click the KVM Switching icon to evoke the operation menu, then select whichever computer that is available for switching.	Next lower PC port	Next lower PC port
Define Hotkey Preceding Sequence	Right-click the KVM Switching icon to evoke the operation menu, and then select Settings (Windows) / Configuration Dialog Box (Mac OS).	User-definable hotkeys sequence for computer selection is "Ctrl +Alt+ [command key]". For Mac, instead of Scroll Lock key, you may use Userdefinable hotkey sequence to switch.	
Autoscan	Right-click the KVM Switching Software icon to evoke the operation menu, then select Start Auto-Scan to activate auto-scanning.	Starts Autoscan	
Autoscan with Programmable Delay Time	Right-click the KVM Switching Software icon to evoke the operation menu, then select a range of Auto-Scan Period.	Autoscan duration adjust to (10 – 60 seconds)	
Stop Autoscan	While auto-scanning, right-click the KVM Switching Software icon to evoke the operation menu, and then select Stop Auto-Scan to deactivate auto-scanning.	Stop Autoscan during scan mode	
Beeper	Right-click the KVM Switching Software icon to evoke the operation menu, then check the box "Turn on Buzzer".	Toggle Beeper on/off	
Keep in Dock (Mac only)	Right-click the KVM Switching Software icon to evoke the operation menu, and then select "Keep in Dock".	KVM switching icon will be on the system tray of your desktop	
Open at Login (Mac only)	Right-click the KVM Switching Software icon to evoke the operation menu, then select "Open at login".	Operate Switcher Software and login	
Fix Audio Port	Right-click the KVM Switching Software icon to evoke the operation menu, then check the box "Fix Audio Port at PC" and select the desired PC port.	Check this option and then select the computer to fix the audio/mic port to the selected computer. Once this option is checked, the audio/mic port will be fixed and become non-switchable.	

6.0 Frequently Asked Questions and other related information

Select **support** on the ACT website to find the latest frequently asked questions for your product. ACT will update these pages frequently to assure you have the most recent information. Check www.act-connectivity.com for more information about your product.

7.0 Service and support

This user manual has been carefully written by ACT's technical experts. If you have problems installing or using the product, please check the **support** link at the website www.act-connectivity.com.

8.0 Warning and points of attention



Due to laws, directives and regulations set out by the European parliament, some (wireless) devices could be subject to limitations concerning its use in certain European member states. In certain European member states the use of such devices could be prohibited. Contact your (local) government for more information about this limitations.

Always follow up the instructions in the manual*, especially where it concerns devices which need to be assembled.

Warning: In most cases this concerns an electronic device. Wrong/improper use may lead to (severe) injuries!

When you connect the device to the mains, make sure it will not be damaged or subject to (high) pressure.

A power socket is needed which should be close and easy accessible from the device.

Repairing of the device should be done by qualified ACT staff. Never try to repair the device yourself. The warranty immediately voids when products have undergone self-repair and/or by misuse. For extended warranty conditions, please visit our website at www.act-connectivity.com

Dispose of the device appropriately. Please follow your countries regulation for the disposal of electronic goods.

Please check below safety points carefully:

- Do not apply external force on the cables
- Do not unplug the device by pulling the power cable

- Do not place the device near heating elements
- Do not let the device come in contact with water or other liquids
- If there is any strange sound, smoke or odor, remove the device immediately from the power outlet.
- Do not put any sharp objects into the venting hole of a product
- Do not use any damaged cables (risk of electric shock)
- Keep the product out of reach of children
- Wipe off the product with soft fabric, not water mop.
- Keep the power plug and outlet clean
- Do not unplug the device from the power outlet with wet hands
- Unplug the device when you don't use it for a long time
- Use the device at a well ventilated place

**Tip: ACT manuals are written with great care. However, due to new technological developments it can happen that a printed manual does not longer contain the most recent information. If you are experiencing any problems with the printed manual or you cannot find what you are looking for, please always check our website www.act-connectivity.com first for the newest updated manual.*

*Frequently asked questions (FAQ). Consult **support** on our website www.act-connectivity.com and see if you can find the right information about your product here. It is highly advisable to consult the FAQ section first, the answer is often here.*

9.0 Warranty conditions

The ACT warranty applies to all ACT products. After buying a second-hand ACT product the remaining period of warranty is measured from the moment of purchase by the product's initial owner. ACT warranty applies to all ACT products and parts, indissolubly connected or mounted to the product it concerns. Power supply adapters, batteries, antennas and all other products not directly integrated in or connected to the main product or products of which, without reasonable doubt, can be assumed that wear and tear during use will show a different pattern than the main product, are not covered by the ACT warranty. Products are not covered by the ACT warranty when exposed to incorrect/improper use, external influences or when opening the service parts of the product by parties other than ACT. ACT may use refurbished materials for repair or replacement of your defective product. ACT cannot be held responsible for changes in network settings by internet providers. We cannot guarantee that the ACT networking product will keep working when settings are changed by the internet providers. ACT cannot guarantee the working of web services, apps and other third party content that is available through ACT products

When my product gets defective

Should you encounter a product rendered defective for reasons other than described above: Please contact your point of purchase for taking care of your defective product.

The logo for ACT, consisting of the letters 'ACT' in a bold, blue, sans-serif font.

www.act-connectivity.com

Trademarks: all brand names are trademarks and/or registered of their respective holders.

The information contained in this document has been created with the utmost care. No legal rights can be derived from these contents. ACT cannot be held responsible, nor liable for the information contained in this document.





AC7900/AC7910

Commutateur KVM avec USB et audio

FR

Manuel

AC7900/AC7910 | Commutateur KVM avec USB et audio

Table des matières

1.0 Introduction	2
1.1 Contenu de l'emballage	2
2.0 Commutateur KVM avec USB et audio/micro.....	3
3.0 Installation.....	3
3.1 Changement entre les ordinateurs	4
3.2 Logiciel.....	4
3.3 Installation sous Windows	4
3.4 Installation sous Mac	4
4.0 Fonctionnement	4
4.1 Bouton « Switch »	5
4.2 Logiciel de commutation KVM pour Windows	6
4.3 Logiciel de commutation KVM pour MAC	7
4.4 Touches de raccourci clavier	7
5.0 Fiche de référence rapide	8
6.0 Frequently Asked Questions and other related information.....	9
7.0 Service and support.....	9
8.0 Warning and points of attention	9
9.0 Warranty conditions	11

1.0 Introduction

Nous vous félicitons d'avoir acheté ce produit ACT de haute qualité ! Ce produit a fait l'objet de tests intensifs par les experts techniques d'ACT. Si vous rencontrez des problèmes avec ce produit, vous êtes couvert par la garantie d'ACT. Veuillez conserver ce manuel et votre preuve d'achat en lieu sûr.

Enregistrez maintenant votre produit sur www.act-connectivity.com pour pouvoir recevoir les mises à jour de votre produit !

1.1 Contenu de l'emballage

Les pièces suivantes doivent être présentes dans l'emballage :

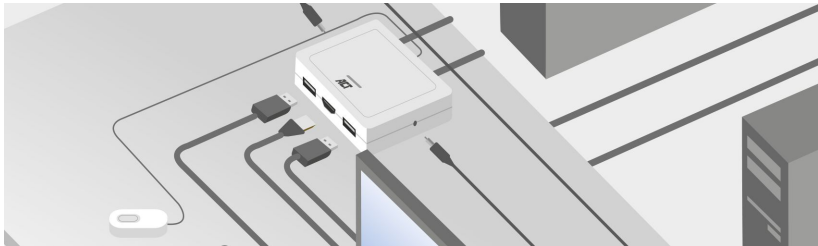
- Commutateur KVM avec USB et audio AC7900/AC7910
- Guide d'installation rapide

2.0 Commutateur KVM avec USB et audio/micro

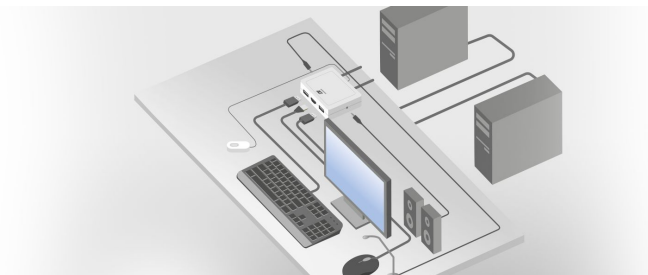
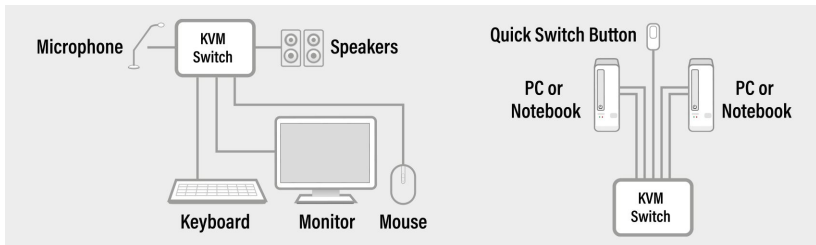
L'AC7900/AC7910 est un commutateur KVM 2-ports avec USB et audio/micro. Il est équipé de 2 câbles fixes, un KVM USB et un Audio/Mic combiné. Un bouton « Switch » câblé est également disponible pour changer facilement d'un ordinateur à l'autre. Il vous permet d'utiliser et de contrôler deux ordinateurs USB différents en utilisant un seul clavier, une seule souris, un seul écran, un seul haut-parleur et un seul microphone.

3.0 Installation

Connectez votre moniteur HDMI/DisplayPort ainsi que votre clavier, souris, haut-parleurs et microphone aux ports du commutateur KVM.



Connectez les câbles HDMI/DisplayPort, USB et audio à votre PC/ordinateur portable.



3.1 Changement entre les ordinateurs

Pour changer facilement et rapidement d'un ordinateur à l'autre, vous pouvez utiliser le bouton « Switch », le logiciel de commutation installé sur votre PC/ordinateur portable ou les touches de raccourci clavier.

3.2 Logiciel

Pour les ordinateurs fonctionnant avec le système d'exploitation Windows/Mac, vous pouvez également utiliser le commutateur KVM à l'aide du logiciel disponible sur le site Web de ACT : www.act-connectivity.com.

3.3 Installation sous Windows

- Téléchargez le logiciel pour Windows à partir du site de ACT www.act-connectivity.com.
- Décompressez le fichier zip téléchargé.
- Installez le logiciel sur votre PC/ordinateur portable en cliquant sur 2port_USBKVMInstall.exe

3.4 Installation sous Mac

- Téléchargez le logiciel pour Mac à partir du site de ACT www.act-connectivity.com.
- Décompressez le fichier zip téléchargé.
- Installez le logiciel sur votre Mac/Macbook en cliquant sur USBKVM Switcher 2 ports.pkg

Remarque : La version pour Mac du logiciel de commutation KVM ne prend en charge que Mac OS 10.4 (Tiger) et les versions ultérieures. Les versions antérieures de Mac OS peuvent fonctionner correctement ou non avec ce système.

Remarque : Le logiciel de commutation KVM est compatible avec les systèmes d'exploitation Windows et Mac OS. Pour les autres systèmes d'exploitation comme Linux, vous pouvez toujours utiliser le raccourci clavier universel - Arrêt défil + Arrêt défil pour changer d'ordinateur.

Toutefois, ce raccourci clavier n'est pas disponible sur Mac OS.

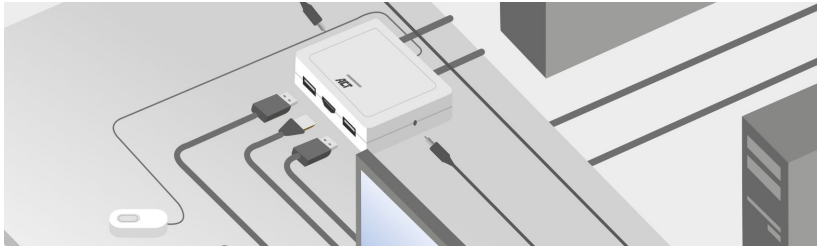
4.0 Fonctionnement

Il y a trois méthodes pour contrôler votre commutateur KVM lorsque vous voulez sélectionner un port d'ordinateur et audio/micro : à l'aide du bouton « Switch » (contrôle câblé), du logiciel de commutation KVM ou des touches de raccourci clavier.

4.1 Bouton « Switch »

Bouton « Switch » (contrôle câblé)

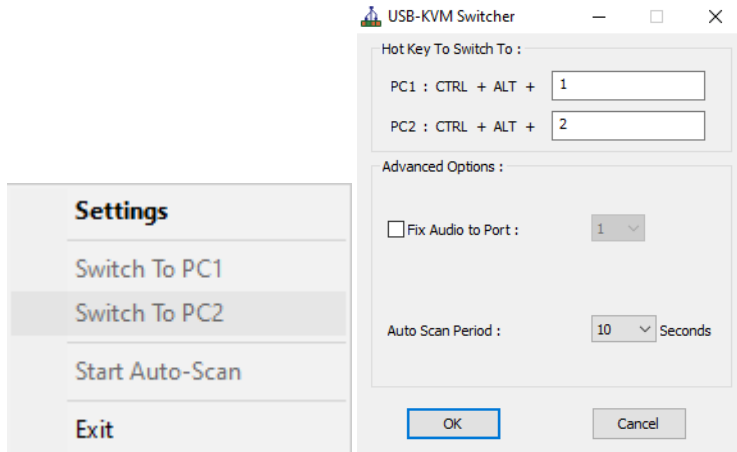
Le bouton « Switch » est un contrôle câblé qui vous permet de contrôler directement la commutation. Appuyez simplement sur le bouton pour changer entre les deux ordinateurs.



4.2 Logiciel de commutation KVM pour Windows

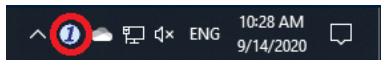
Logiciel de commutation KVM (plateforme Windows)

Pour le fonctionnement du logiciel de commutation KVM, veuillez vous référer à la « [Fiche de référence rapide](#) ».



Windows : Menu d'utilisation configuration

Boîte de dialogue de configuration



Aucune connexion en direct détectée



Le canal d'ordinateur actif actuel est sur le port 1

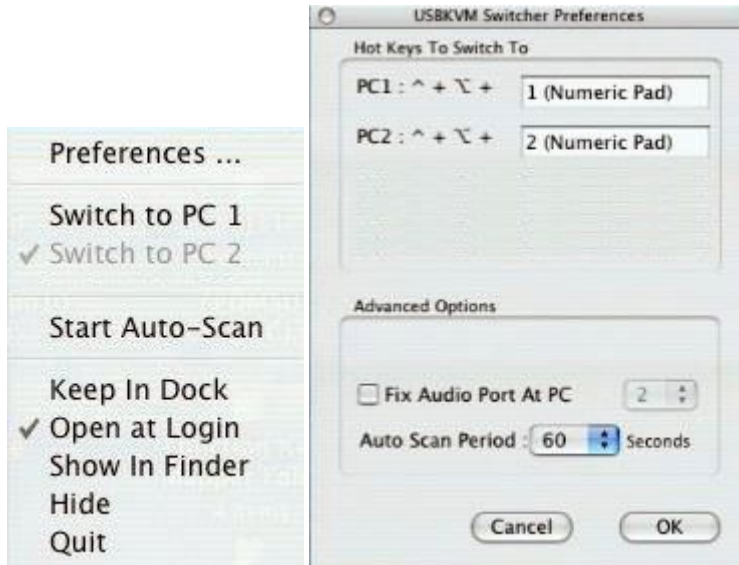


Le canal d'ordinateur actif actuel est sur le port 2

4.3 Logiciel de commutation KVM pour MAC

Logiciel de commutation KVM (plateforme Mac)

Pour le fonctionnement du logiciel de commutation KVM, veuillez vous référer à la « [Fiche de référence rapide](#) » .



Mac : Menu d'utilisation

Boîte de dialogue de configuration



Aucune connexion en direct détectée



Le canal d'ordinateur actif actuel est sur le port 1



Le canal d'ordinateur actif actuel est sur le port 2

4.4 Touches de raccourci clavier

Touches de raccourci clavier

Pour l'utilisation des touches de raccourci clavier, veuillez vous référer à la « [Fiche de référence rapide](#) » .

5.0 Fiche de référence rapide

Quick Switch Button Commands		Keyboard Hotkeys Commands	
Command	Quick Switch Button	Command	Keyboard Hotkeys
Select PC Port	Press the button to toggle between the two computers.	Select PC Port	Press 2 times Scroll Lock Each keystroke in hotkey sequence should be pressed within two seconds. Otherwise, the hotkey sequence will not be validated.
Switching Software Commands			
Command	Switching Software	Description	Description
Select PC Port	Right-click the KVM Switching Software icon to evoke the operation menu, then select whichever computer that is available for switching.	Select PC port	Select PC port
Next lower PC Port	Right-click the KVM Switching icon to evoke the operation menu, then select whichever computer that is available for switching.	Next lower PC port	Next lower PC port
Next higher PC Port	Right-click the KVM Switching icon to evoke the operation menu, then select whichever computer that is available for switching.	Next lower PC port	Next lower PC port
Define Hotkey Preceding Sequence	Right-click the KVM Switching icon to evoke the operation menu, and then select Settings (Windows) / Configuration Dialog Box (Mac OS).	User-definable hotkeys sequence for computer selection is "Ctrl +Alt+ [command key]". For Mac, instead of Scroll Lock key, you may use Userdefinable hotkey sequence to switch.	
Autoscan	Right-click the KVM Switching Software icon to evoke the operation menu, then select Start Auto-Scan to activate auto-scanning.	Starts Autoscan	
Autoscan with Programmable Delay Time	Right-click the KVM Switching Software icon to evoke the operation menu, then select a range of Auto-Scan Period.	Autoscan duration adjust to (10 – 60 seconds)	
Stop Autoscan	While auto-scanning, right-click the KVM Switching Software icon to evoke the operation menu, and then select Stop Auto-Scan to deactivate auto-scanning.	Stop Autoscan during scan mode	
Beeper	Right-click the KVM Switching Software icon to evoke the operation menu, then check the box "Turn on Buzzer".	Toggle Beeper on/off	
Keep in Dock (Mac only)	Right-click the KVM Switching Software icon to evoke the operation menu, and then select "Keep in Dock".	KVM switching icon will be on the system tray of your desktop	
Open at Login (Mac only)	Right-click the KVM Switching Software icon to evoke the operation menu, then select "Open at login".	Operate Switcher Software and login	
Fix Audio Port	Right-click the KVM Switching Software icon to evoke the operation menu, then check the box "Fix Audio Port at PC" and select the desired PC port.	Check this option and then select the computer to fix the audio/mic port to the selected computer. Once this option is checked, the audio/mic port will be fixed and become non-switchable.	

6.0 Frequently Asked Questions and other related information

Select **support** on the ACT website to find the latest frequently asked questions for your product. ACT will update these pages frequently to assure you have the most recent information. Check www.act-connectivity.com for more information about your product.

7.0 Service and support

This user manual has been carefully written by ACT's technical experts. If you have problems installing or using the product, please check the **support** link at the website www.act-connectivity.com.

8.0 Warning and points of attention



Due to laws, directives and regulations set out by the European parliament, some (wireless) devices could be subject to limitations concerning its use in certain European member states. In certain European member states the use of such devices could be prohibited. Contact your (local) government for more information about this limitations.

Always follow up the instructions in the manual*, especially where it concerns devices which need to be assembled.

Warning: In most cases this concerns an electronic device. Wrong/improper use may lead to (severe) injuries!

When you connect the device to the mains, make sure it will not be damaged or subject to (high) pressure.

A power socket is needed which should be close and easy accessible from the device.

Repairing of the device should be done by qualified ACT staff. Never try to repair the device yourself. The warranty immediately voids when products have undergone self-repair and/or by misuse. For extended warranty conditions, please visit our website at www.act-connectivity.com

Dispose of the device appropriately. Please follow your countries regulation for the disposal of electronic goods.

Please check below safety points carefully:

- Do not apply external force on the cables
- Do not unplug the device by pulling the power cable

- Do not place the device near heating elements
- Do not let the device come in contact with water or other liquids
- If there is any strange sound, smoke or odor, remove the device immediately from the power outlet.
- Do not put any sharp objects into the venting hole of a product
- Do not use any damaged cables (risk of electric shock)
- Keep the product out of reach of children
- Wipe off the product with soft fabric, not water mop.
- Keep the power plug and outlet clean
- Do not unplug the device from the power outlet with wet hands
- Unplug the device when you don't use it for a long time
- Use the device at a well ventilated place

**Tip: ACT manuals are written with great care. However, due to new technological developments it can happen that a printed manual does not longer contain the most recent information. If you are experiencing any problems with the printed manual or you cannot find what you are looking for, please always check our website www.act-connectivity.com first for the newest updated manual.*

*Frequently asked questions (FAQ). Consult **support** on our website www.act-connectivity.com and see if you can find the right information about your product here. It is highly advisable to consult the FAQ section first, the answer is often here.*

9.0 Warranty conditions

The ACT warranty applies to all ACT products. After buying a second-hand ACT product the remaining period of warranty is measured from the moment of purchase by the product's initial owner. ACT warranty applies to all ACT products and parts, indissolubly connected or mounted to the product it concerns. Power supply adapters, batteries, antennas and all other products not directly integrated in or connected to the main product or products of which, without reasonable doubt, can be assumed that wear and tear during use will show a different pattern than the main product, are not covered by the ACT warranty. Products are not covered by the ACT warranty when exposed to incorrect/improper use, external influences or when opening the service parts of the product by parties other than ACT. ACT may use refurbished materials for repair or replacement of your defective product. ACT cannot be held responsible for changes in network settings by internet providers. We cannot guarantee that the ACT networking product will keep working when settings are changed by the internet providers. ACT cannot guarantee the working of web services, apps and other third party content that is available through ACT products

When my product gets defective

Should you encounter a product rendered defective for reasons other than described above: Please contact your point of purchase for taking care of your defective product.

The logo for ACT, consisting of the letters 'ACT' in a bold, blue, sans-serif font.

www.act-connectivity.com

Trademarks: all brand names are trademarks and/or registered of their respective holders.

The information contained in this document has been created with the utmost care. No legal rights can be derived from these contents. ACT cannot be held responsible, nor liable for the information contained in this document.





AC7900/AC7910
Conmutador KVM con USB y audio

ES

Manual

AC7900/AC7910 | Conmutador KVM con USB y audio

Tabla de contenido

1.0 Introducción	2
1.1 Contenido del paquete.....	2
Conmutador KVM 2.0 con USB y audio/micrófono.....	3
3.0 Instalación.....	3
3.1 Cambio entre equipos.....	4
3.2 Software.....	4
3.3 Instalación en Windows	4
3.4 Instalación en Mac.....	4
4.0 Funcionamiento	4
4.1 Botón Conmutar.....	5
4.2 Software de conmutación KVM para Windows.....	6
4.3 Software de conmutación KVM para MAC	7
4.4 Teclas de acceso rápido del teclado	7
5.0 Hoja de referencia rápida.....	8
6.0 Frequently Asked Questions and other related information.....	9
7.0 Service and support.....	9
8.0 Warning and points of attention	9
9.0 Warranty conditions	11

1.0 Introducción

¡Enhorabuena por la compra de este producto de ACT de alta calidad! Este producto ha sido sometido a un exigente proceso de pruebas llevado a cabo por expertos técnicos pertenecientes a ACT. Si

tiene algún problema con este producto, le ampara la garantía de ACT. Conserve este manual y el recibo de compra en un lugar seguro.

¡Registre su producto ahora en www.act-connectivity.com y reciba las actualizaciones del mismo!

1.1 Contenido del paquete

El paquete debe contener los siguientes artículos:

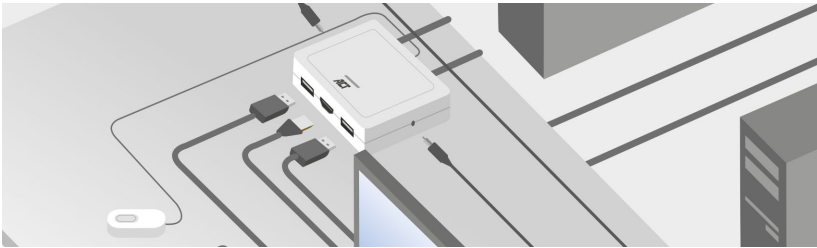
- Conmutador KVM AC7900/AC7910 con USB y audio
- Guía de instalación rápida

Conmutador KVM 2.0 con USB y audio/micrófono

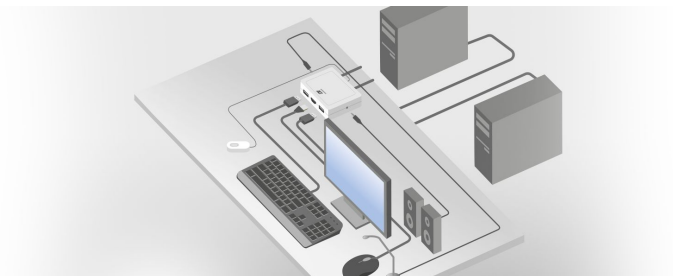
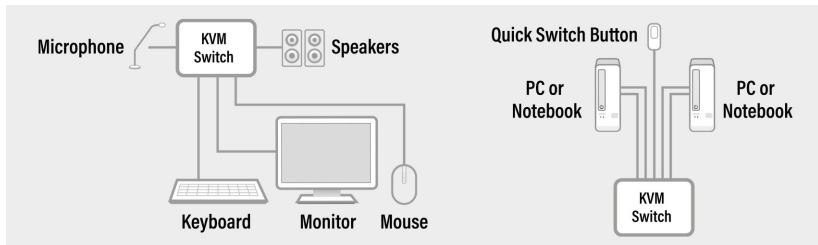
El producto AC7900/AC7910 es un conmutador KVM de 2 puertos con USB y audio/micrófono. Está equipado con 2 juegos de cables fijos de cables combinados KVM USB y audio/micrófono. También está disponible un botón Conmutar con cable para cambiar fácilmente entre dos equipos. Le permite acceder a dos equipos compatibles con USB y controlarlos con solo un teclado, ratón, pantalla, juego de parlantes y micrófono USB.

3.0 Instalación

Conecte el monitor, el teclado, el ratón, los altavoces y el micrófono HDMI/DisplayPort a los puertos disponibles del conmutador KVM.



Conecte los cables USB y de audio HDMI/DisplayPort adjuntos al equipo de sobremesa o portátil.



3.1 Cambio entre equipos

Para cambiar de forma rápida y sencilla entre dos equipos, puede utilizar el botón Conmutar, el software de conmutación instalado en su PC o portátil o las teclas de método abreviado del teclado.

3.2 Software

Para equipos que ejecutan sistemas operativos Windows o Mac, también puede hacer cambiar el conmutador KVM mediante el software disponible en el sitio web de ACT www.act-connectivity.com.

3.3 Instalación en Windows

- Descargue el software para Windows del sitio web de ACT www.act-connectivity.com.
- Descomprime el archivo zip descargado.
- Instale el software en su PC o portátil haciendo clic en el archivo 2port_USBKVMInstall.exe.

3.4 Instalación en Mac

- Descargue el software para Mac del sitio web de ACT www.act-connectivity.com.
- Descomprime el archivo zip descargado.
- Instale el software en su Mac o Macbook haciendo clic en el archivo USBKVM Switcher 2 ports.pkg.

Nota: La versión para Mac del software de conmutación KVM solo es compatible con Mac OS 10.4 (Tiger) y versiones posteriores. Las versiones anteriores de Mac OS pueden o no funcionar bien con él.

Nota: El software de conmutación KVM es compatible con los sistemas operativos Windows y Mac OS. Para otras plataformas de sistema operativo como Linux, aún puede usar la tecla de acceso rápido del teclado universal: Bloqueo de desplazamiento + Bloqueo de desplazamiento para cambiar de equipo. No entanto, esta tecla de atalho de comutação não está disponível para Mac OS.

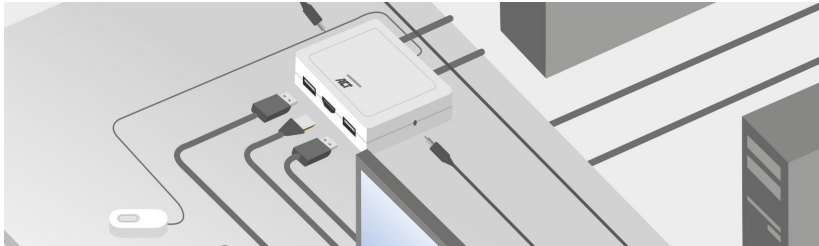
4.0 Funcionamiento

Hay tres métodos para controlar el conmutador KVM para la selección de PC y de puerto de audio/micrófono: mediante el botón Conmutar (un mando a distancia con cable), el software de conmutación KVM o las teclas de acceso rápido del teclado.

4.1 Botón Conmutar

Botón Conmutar (un mando a distancia con cable)

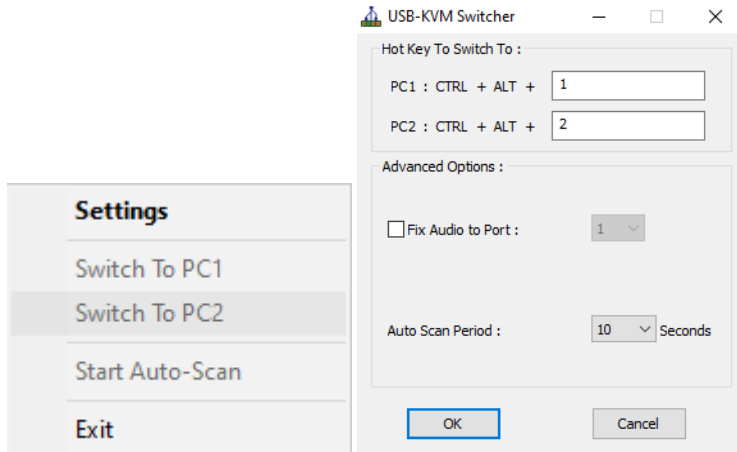
El botón Conmutar es un mando a distancia con cable que le permite un control de conmutación directo. Simplemente presione el botón para alternar entre dos equipo.



4.2 Software de conmutación KVM para Windows

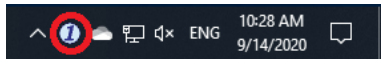
Software de conmutación KVM (plataforma para Windows)

Para conocer el funcionamiento del software de conmutación KVM, consulte la ["Hoja de referencia rápida"](#).



Windows: Menú de operación configuración

Cuadro de diálogo de configuración



No se detectó conexión en vivo



El canal del equipo activo actual está en el puerto 1

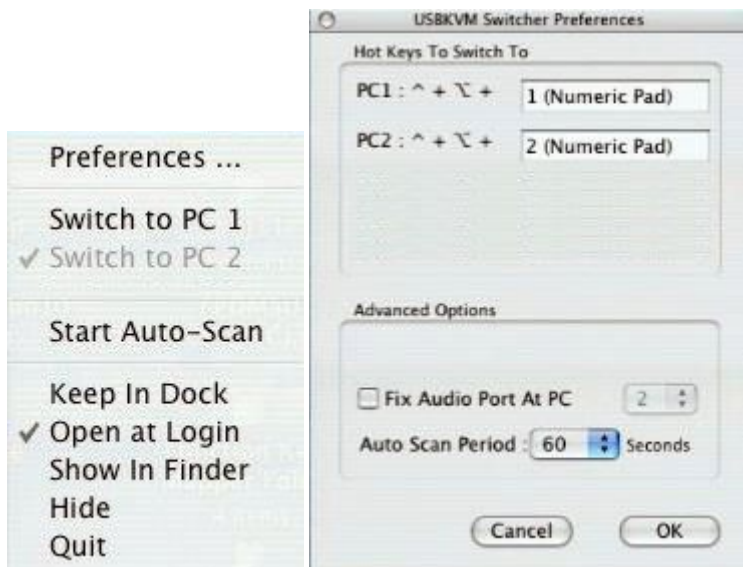


El canal del equipo activo actual está en el puerto 2

4.3 Software de conmutación KVM para MAC

Software de conmutación KVM (plataforma para Mac)

Para conocer el funcionamiento del software de conmutación KVM, consulte la ["Hoja de referencia rápida"](#).



Mac: Menú de operación

Cuadro de diálogo de configuración



No se detectó conexión en vivo



El canal del equipo activo actual está en el puerto 1



El canal del equipo activo actual está en el puerto 2

4.4 Teclas de acceso rápido del teclado

Teclas de acceso rápido del teclado

Para conocer el funcionamiento de las teclas de acceso rápido del teclado, consulte la ["Hoja de referencia rápida"](#).

5.0 Hoja de referencia rápida

Quick Switch Button Commands		Keyboard Hotkeys Commands	
Command	Quick Switch Button	Command	Keyboard Hotkeys
Select PC Port	Press the button to toggle between the two computers.	Select PC Port	Press 2 times Scroll Lock Each keystroke in hotkey sequence should be pressed within two seconds. Otherwise, the hotkey sequence will not be validated.
Switching Software Commands			
Command	Switching Software	Description	Description
Select PC Port	Right-click the KVM Switching Software icon to evoke the operation menu, then select whichever computer that is available for switching.	Select PC port	Select PC port
Next lower PC Port	Right-click the KVM Switching icon to evoke the operation menu, then select whichever computer that is available for switching.	Next lower PC port	Next lower PC port
Next higher PC Port	Right-click the KVM Switching icon to evoke the operation menu, then select whichever computer that is available for switching.	Next lower PC port	Next lower PC port
Define Hotkey Preceding Sequence	Right-click the KVM Switching icon to evoke the operation menu, and then select Settings (Windows) / Configuration Dialog Box (Mac OS).	User-definable hotkeys sequence for computer selection is "Ctrl +Alt+ [command key]". For Mac, instead of Scroll Lock key, you may use Userdefinable hotkey sequence to switch.	
Autoscan	Right-click the KVM Switching Software icon to evoke the operation menu, then select Start Auto-Scan to activate auto-scanning.	Starts Autoscan	
Autoscan with Programmable Delay Time	Right-click the KVM Switching Software icon to evoke the operation menu, then select a range of Auto-Scan Period.	Autoscan duration adjust to (10 – 60 seconds)	
Stop Autoscan	While auto-scanning, right-click the KVM Switching Software icon to evoke the operation menu, and then select Stop Auto-Scan to deactivate auto-scanning.	Stop Autoscan during scan mode	
Beeper	Right-click the KVM Switching Software icon to evoke the operation menu, then check the box "Turn on Buzzer".	Toggle Beeper on/off	
Keep in Dock (Mac only)	Right-click the KVM Switching Software icon to evoke the operation menu, and then select "Keep in Dock".	KVM switching icon will be on the system tray of your desktop	
Open at Login (Mac only)	Right-click the KVM Switching Software icon to evoke the operation menu, then select "Open at login".	Operate Switcher Software and login	
Fix Audio Port	Right-click the KVM Switching Software icon to evoke the operation menu, then check the box "Fix Audio Port at PC" and select the desired PC port.	Check this option and then select the computer to fix the audio/mic port to the selected computer. Once this option is checked, the audio/mic port will be fixed and become non-switchable.	

6.0 Frequently Asked Questions and other related information

Select **support** on the ACT website to find the latest frequently asked questions for your product. ACT will update these pages frequently to assure you have the most recent information. Check www.act-connectivity.com for more information about your product.

7.0 Service and support

This user manual has been carefully written by ACT's technical experts. If you have problems installing or using the product, please check the **support** link at the website www.act-connectivity.com.

8.0 Warning and points of attention



Due to laws, directives and regulations set out by the European parliament, some (wireless) devices could be subject to limitations concerning its use in certain European member states. In certain European member states the use of such devices could be prohibited. Contact your (local) government for more information about this limitations.

Always follow up the instructions in the manual*, especially where it concerns devices which need to be assembled.

Warning: In most cases this concerns an electronic device. Wrong/improper use may lead to (severe) injuries!

When you connect the device to the mains, make sure it will not be damaged or subject to (high) pressure.

A power socket is needed which should be close and easy accessible from the device.

Repairing of the device should be done by qualified ACT staff. Never try to repair the device yourself. The warranty immediately voids when products have undergone self-repair and/or by misuse. For extended warranty conditions, please visit our website at www.act-connectivity.com

Dispose of the device appropriately. Please follow your countries regulation for the disposal of electronic goods.

Please check below safety points carefully:

- Do not apply external force on the cables
- Do not unplug the device by pulling the power cable

- Do not place the device near heating elements
- Do not let the device come in contact with water or other liquids
- If there is any strange sound, smoke or odor, remove the device immediately from the power outlet.
- Do not put any sharp objects into the venting hole of a product
- Do not use any damaged cables (risk of electric shock)
- Keep the product out of reach of children
- Wipe off the product with soft fabric, not water mop.
- Keep the power plug and outlet clean
- Do not unplug the device from the power outlet with wet hands
- Unplug the device when you don't use it for a long time
- Use the device at a well ventilated place

**Tip: ACT manuals are written with great care. However, due to new technological developments it can happen that a printed manual does not longer contain the most recent information. If you are experiencing any problems with the printed manual or you cannot find what you are looking for, please always check our website www.act-connectivity.com first for the newest updated manual.*

*Frequently asked questions (FAQ). Consult **support** on our website www.act-connectivity.com and see if you can find the right information about your product here. It is highly advisable to consult the FAQ section first, the answer is often here.*

9.0 Warranty conditions

The ACT warranty applies to all ACT products. After buying a second-hand ACT product the remaining period of warranty is measured from the moment of purchase by the product's initial owner. ACT warranty applies to all ACT products and parts, indissolubly connected or mounted to the product it concerns. Power supply adapters, batteries, antennas and all other products not directly integrated in or connected to the main product or products of which, without reasonable doubt, can be assumed that wear and tear during use will show a different pattern than the main product, are not covered by the ACT warranty. Products are not covered by the ACT warranty when exposed to incorrect/improper use, external influences or when opening the service parts of the product by parties other than ACT. ACT may use refurbished materials for repair or replacement of your defective product. ACT cannot be held responsible for changes in network settings by internet providers. We cannot guarantee that the ACT networking product will keep working when settings are changed by the internet providers. ACT cannot guarantee the working of web services, apps and other third party content that is available through ACT products

When my product gets defective

Should you encounter a product rendered defective for reasons other than described above: Please contact your point of purchase for taking care of your defective product.

The logo for ACT, consisting of the letters 'ACT' in a bold, blue, sans-serif font.

www.act-connectivity.com

Trademarks: all brand names are trademarks and/or registered of their respective holders.

The information contained in this document has been created with the utmost care. No legal rights can be derived from these contents. ACT cannot be held responsible, nor liable for the information contained in this document.





AC7900/AC7910
Comutador KVM com USB e Áudio

PT

Manual

AC7900/AC7910 | Comutador KVM com USB e Áudio

Índice

1.0 Introdução	2
1.1 Conteúdo da embalagem	2
2.0 Comutador KVM com USB e Áudio/Microfone	3
3.0 Instalação.....	3
3.1 Comutar entre computadores	4
3.2 Software.....	4
3.3 Instalação no Windows	4
3.4 Instalação no Mac.....	4
4.0 Funcionamento	4
4.1 Botão de comutação	5
4.2 Software de comutação KVM Windows.....	6
4.3 Software de comutação KVM MAC	7
4.4 Teclas de atalho do teclado.....	7
5.0 Folha de referência rápida	8
6.0 Frequently Asked Questions and other related information.....	9
7.0 Service and support.....	9
8.0 Warning and points of attention	9
9.0 Warranty conditions	11

1.0 Introdução

Parabéns por ter adquirido este produto de alta qualidade ACT! Este produto foi submetido a testes intensivos pelos técnicos da ACT. A ACT oferece garantia para cobrir quaisquer problemas do produto. Guarde este manual e o recibo de compra num local seguro.a

Registe o seu produto agora em www.act-connectivity.com e receba atualizações do produto!

1.1 Conteúdo da embalagem

A embalagem deverá incluir os seguintes componentes:

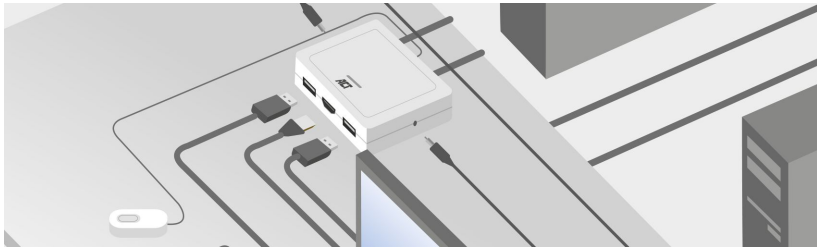
- Comutador KVM com USB e Áudio AC7900/AC7910
- Guia de instalação rápida

2.0 Computador KVM com USB e Áudio/Microfone

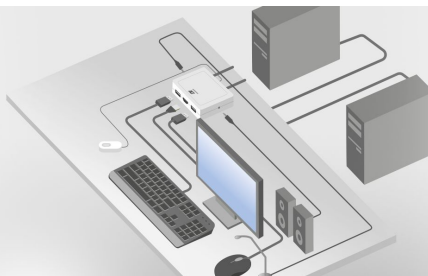
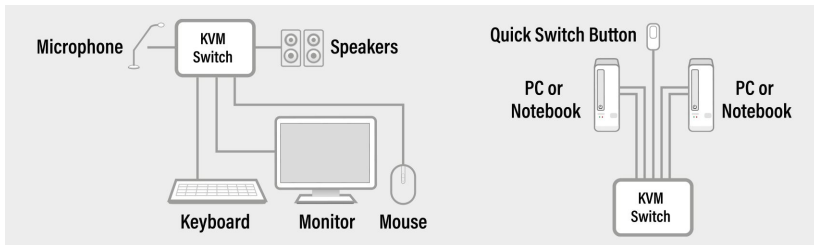
O AC7900/AC7910 é um computador KVM de 2 portas com USB e áudio/microfone. Está equipado com 2 conjuntos de cabos fixos USB KVM e cabos combinados de áudio/microfone. Também está disponível um botão de comutação com fio para comutar facilmente entre dois computadores. Permite-lhe aceder, controlar dois computadores com portas USB com apenas um teclado USB, rato, monitor, altifalantes, e microfone.

3.0 Instalação

Ligue o seu monitor HDMI/DisplayPort, teclado, rato, altifalantes e microfone às portas disponíveis no Computador KVM.



Ligue os cabos HDMI/DisplayPort, USB e de áudio aos seus PC/computadores portáteis.



3.1 Comutar entre computadores

Para comutar de forma fácil e rápida entre dois computadores, pode utilizar o botão de comutação, o software de comutação instalado no seu PC/computador portátil ou as teclas de atalho do teclado.

3.2 Software

Para computadores com os sistemas operativos Windows/Mac, pode também efetuar a comutação do comutador KVM com o software disponível no website da ACT www.act-connectivity.com.

3.3 Instalação no Windows

- Transfira o software mais recente para Windows a partir do website da ACT www.act-connectivity.com.
- Descomprima o ficheiro zip transferido
- Instale o software no seu PC/computador portátil clicando no ficheiro 2port_USBKVMInstall.exe

3.4 Instalação no Mac

- Transfira o software mais recente para Mac a partir do website da ACT www.act-connectivity.com.
- Descomprima o ficheiro zip transferido
- Instale o software no seu Mac/Macbook clicando no ficheiro USBKVM Switcher 2 ports.pkg

Nota: A versão Mac do software de comutação KVM suporta apenas Mac OS 10.4 (Tiger) e mais recente. As versões anteriores do Mac OS poderão não funcionar corretamente com o software.

Nota: O software de comutação KVM suporta os sistemas operativos Windows e Mac OS. Para outras plataformas, tais como, Linux, é possível utilizar as teclas de atalho universais – Scroll Lock + Scroll Lock para comutar entre computadores. No entanto, esta tecla de atalho de comutação não está disponível para Mac OS.

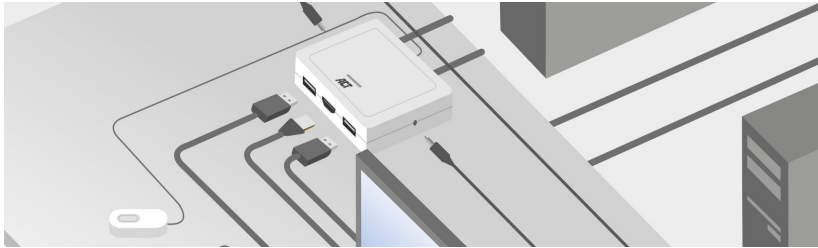
4.0 Funcionamento

Existem três métodos para controlar o seu comutador KVM para seleção do computador e das portas de áudio/microfone: utilizando o botão de comutação (um controlo remoto com ligação física), software de comutação KVM ou teclas de atalho do teclado.

4.1 Botão de comutação

Botão de comutação (um controlo remoto com ligação física)

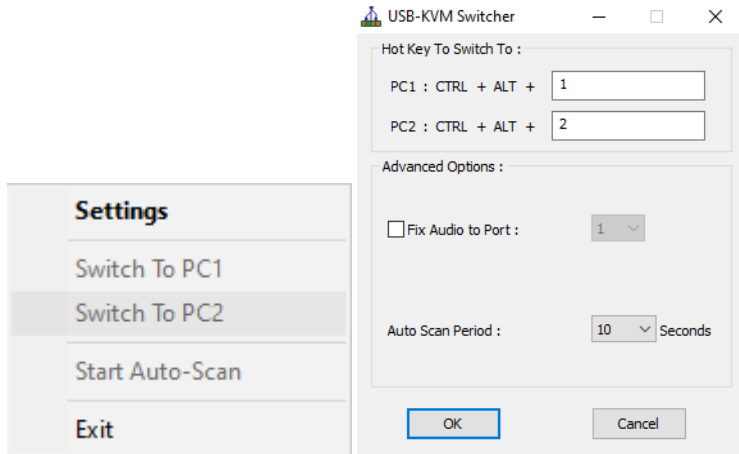
O botão de comutação é um controlo remoto com ligação física que permite um controlo direto da comutação. Basta pressionar o botão para comutar entre dois computadores.



4.2 Software de comutação KVM Windows

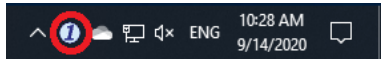
Software de comutação KVM (plataforma Windows)

Para utilização do software de comutação KVM, consulte a [“Folha de referência rápida”](#).



Windows: Menu de operações

Caixa de diálogo de configuração



Não foi detetada qualquer ligação ativa



O canal atual de computador ativo está na porta 1

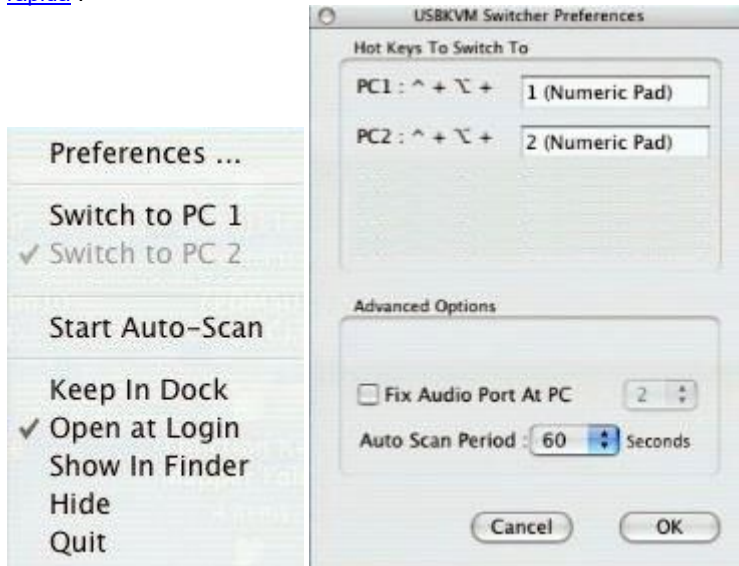


O canal atual de computador ativo está na porta 2

4.3 Software de comutação KVM MAC

Software de comutação KVM (plataforma Mac)

Para utilização do software de comutação KVM, consulte a [“Folha de referência rápida”](#).



Mac: Menu de operações

Caixa de diálogo de configuração



Não foi detetada qualquer ligação ativa



O canal atual de computador ativo está na porta 1



O canal atual de computador ativo está na porta 2

4.4 Teclas de atalho do teclado

Teclas de atalho do teclado

Para utilização das teclas de atalho, consulte a [“Folha de referência rápida”](#).

5.0 Folha de referência rápida

Quick Switch Button Commands		Keyboard Hotkeys Commands	
Command	Quick Switch Button	Command	Keyboard Hotkeys
Select PC Port	Press the button to toggle between the two computers.	Select PC Port	Press 2 times Scroll Lock Each keystroke in hotkey sequence should be pressed within two seconds. Otherwise, the hotkey sequence will not be validated.
Switching Software Commands			
Command	Switching Software	Description	Description
Select PC Port	Right-click the KVM Switching Software icon to evoke the operation menu, then select whichever computer that is available for switching.	Select PC port	Select PC port
Next lower PC Port	Right-click the KVM Switching icon to evoke the operation menu, then select whichever computer that is available for switching.	Next lower PC port	Next lower PC port
Next higher PC Port	Right-click the KVM Switching icon to evoke the operation menu, then select whichever computer that is available for switching.	Next lower PC port	Next lower PC port
Define Hotkey Preceding Sequence	Right-click the KVM Switching icon to evoke the operation menu, and then select Settings (Windows) / Configuration Dialog Box (Mac OS).	User-definable hotkeys sequence for computer selection is "Ctrl +Alt+ [command key]". For Mac, instead of Scroll Lock key, you may use Userdefinable hotkey sequence to switch.	
Autoscan	Right-click the KVM Switching Software icon to evoke the operation menu, then select Start Auto-Scan to activate auto-scanning.	Starts Autoscan	
Autoscan with Programmable Delay Time	Right-click the KVM Switching Software icon to evoke the operation menu, then select a range of Auto-Scan Period.	Autoscan duration adjust to (10 – 60 seconds)	
Stop Autoscan	While auto-scanning, right-click the KVM Switching Software icon to evoke the operation menu, and then select Stop Auto-Scan to deactivate auto-scanning.	Stop Autoscan during scan mode	
Beeper	Right-click the KVM Switching Software icon to evoke the operation menu, then check the box "Turn on Buzzer".	Toggle Beeper on/off	
Keep in Dock (Mac only)	Right-click the KVM Switching Software icon to evoke the operation menu, and then select "Keep in Dock".	KVM switching icon will be on the system tray of your desktop	
Open at Login (Mac only)	Right-click the KVM Switching Software icon to evoke the operation menu, then select "Open at login".	Operate Switcher Software and login	
Fix Audio Port	Right-click the KVM Switching Software icon to evoke the operation menu, then check the box "Fix Audio Port at PC" and select the desired PC port.	Check this option and then select the computer to fix the audio/mic port to the selected computer. Once this option is checked, the audio/mic port will be fixed and become non-switchable.	

6.0 Frequently Asked Questions and other related information

Select **support** on the ACT website to find the latest frequently asked questions for your product. ACT will update these pages frequently to assure you have the most recent information. Check www.act-connectivity.com for more information about your product.

7.0 Service and support

This user manual has been carefully written by ACT's technical experts. If you have problems installing or using the product, please check the **support** link at the website www.act-connectivity.com.

8.0 Warning and points of attention



Due to laws, directives and regulations set out by the European parliament, some (wireless) devices could be subject to limitations concerning its use in certain European member states. In certain European member states the use of such devices could be prohibited. Contact your (local) government for more information about this limitations.

Always follow up the instructions in the manual*, especially where it concerns devices which need to be assembled.

Warning: In most cases this concerns an electronic device. Wrong/improper use may lead to (severe) injuries!

When you connect the device to the mains, make sure it will not be damaged or subject to (high) pressure.

A power socket is needed which should be close and easy accessible from the device.

Repairing of the device should be done by qualified ACT staff. Never try to repair the device yourself. The warranty immediately voids when products have undergone self-repair and/or by misuse. For extended warranty conditions, please visit our website at www.act-connectivity.com

Dispose of the device appropriately. Please follow your countries regulation for the disposal of electronic goods.

Please check below safety points carefully:

- Do not apply external force on the cables
- Do not unplug the device by pulling the power cable

- Do not place the device near heating elements
- Do not let the device come in contact with water or other liquids
- If there is any strange sound, smoke or odor, remove the device immediately from the power outlet.
- Do not put any sharp objects into the venting hole of a product
- Do not use any damaged cables (risk of electric shock)
- Keep the product out of reach of children
- Wipe off the product with soft fabric, not water mop.
- Keep the power plug and outlet clean
- Do not unplug the device from the power outlet with wet hands
- Unplug the device when you don't use it for a long time
- Use the device at a well ventilated place

**Tip: ACT manuals are written with great care. However, due to new technological developments it can happen that a printed manual does not longer contain the most recent information. If you are experiencing any problems with the printed manual or you cannot find what you are looking for, please always check our website www.act-connectivity.com first for the newest updated manual.*

*Frequently asked questions (FAQ). Consult **support** on our website www.act-connectivity.com and see if you can find the right information about your product here. It is highly advisable to consult the FAQ section first, the answer is often here.*

9.0 Warranty conditions

The ACT warranty applies to all ACT products. After buying a second-hand ACT product the remaining period of warranty is measured from the moment of purchase by the product's initial owner. ACT warranty applies to all ACT products and parts, indissolubly connected or mounted to the product it concerns. Power supply adapters, batteries, antennas and all other products not directly integrated in or connected to the main product or products of which, without reasonable doubt, can be assumed that wear and tear during use will show a different pattern than the main product, are not covered by the ACT warranty. Products are not covered by the ACT warranty when exposed to incorrect/improper use, external influences or when opening the service parts of the product by parties other than ACT. ACT may use refurbished materials for repair or replacement of your defective product. ACT cannot be held responsible for changes in network settings by internet providers. We cannot guarantee that the ACT networking product will keep working when settings are changed by the internet providers. ACT cannot guarantee the working of web services, apps and other third party content that is available through ACT products

When my product gets defective

Should you encounter a product rendered defective for reasons other than described above: Please contact your point of purchase for taking care of your defective product.

The logo for ACT, consisting of the letters 'ACT' in a bold, blue, sans-serif font.

www.act-connectivity.com

Trademarks: all brand names are trademarks and/or registered of their respective holders.

The information contained in this document has been created with the utmost care. No legal rights can be derived from these contents. ACT cannot be held responsible, nor liable for the information contained in this document.





AC7900/AC7910
Switch KVM con USB e audio

IT

Manuale

AC7900/AC7910 | Switch KVM con USB e audio

Indice

1.0 Introduzione	2
1.1 Contenuto della confezione	2
2.0 Switch KVM con USB e audio/microfono.....	3
3.0 Installazione	3
3.1 Passaggio tra due computer.....	4
3.2 Software.....	4
3.3 Installazione su Windows	4
3.4 Installazione su Mac	4
4.0 Funzionamento	4
4.1 Pulsante Switch	4
4.2 Software di commutazione KVM per Windows.....	6
4.3 Software di commutazione KVM per Mac.....	7
4.4 Tasti di scelta rapida della tastiera	7
5.0 Scheda di riferimento rapido	8
6.0 Frequently Asked Questions and other related information.....	9
7.0 Service and support.....	9
8.0 Warning and points of attention	9
9.0 Warranty conditions	11

1.0 Introduzione

Congratulazioni per l'acquisto di questo prodotto ACT di alta qualità! Questo prodotto è stato sottoposto ad analisi approfondite da parte dei tecnici ACT. Se si dovessero riscontrare problemi di qualsiasi sorta con questo prodotto, si è coperti da una garanzia

ACT. Si prega di conservare questo manuale e lo scontrino in un luogo sicuro.

Registrare il prodotto su www.act-connectivity.com per ricevere aggiornamenti sul prodotto!

1.1 Contenuto della confezione

Nella confezione devono essere presenti i seguenti elementi:

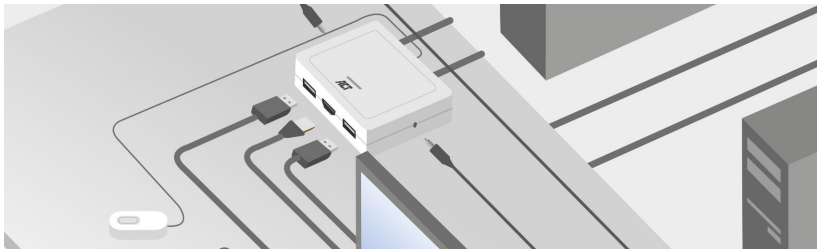
- Switch KVM con USB e audio AC7900/AC7910
- Guida di installazione rapida

2.0 Switch KVM con USB e audio/microfono

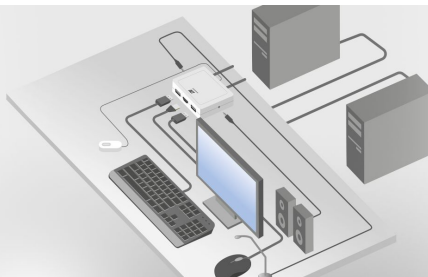
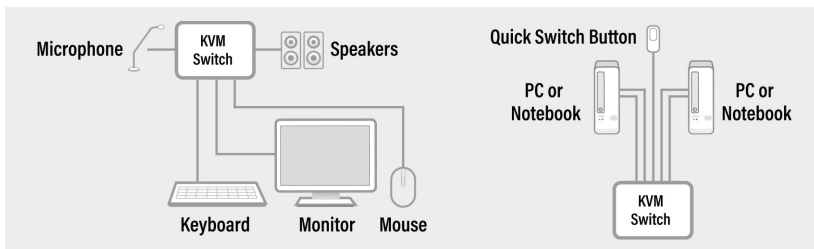
L'AC7900/AC7910 è uno switch KVM a 2 porte con USB e audio/microfono. È dotato di 2 set di cavi fissi di cavi combo USB KVM e audio/microfono. È inoltre disponibile un pulsante Switch cablato per passare facilmente da un computer all'altro. Consente di accedere e controllare due computer abilitati USB con una sola tastiera, mouse, display, set di altoparlanti e microfono USB.

3.0 Installazione

Collegare il monitor HDMI/DisplayPort, la tastiera, il mouse, gli altoparlanti e il microfono alle porte disponibili sullo switch KVM.



Collegare i cavi HDMI/DisplayPort, USB e audio collegati a entrambi i PC/notebook.



3.1 Passaggio tra due computer

Per un passaggio semplice e veloce tra due computer, è possibile utilizzare il pulsante Switch, il software di commutazione installato sul PC/notebook o i tasti di scelta rapida della tastiera.

3.2 Software

Per i computer con sistemi operativi Windows/Mac, è inoltre possibile cambiare lo switch KVM utilizzando il software disponibile dal sito web di ACT www.act-connectivity.com.

3.3 Installazione su Windows

- Scaricare il software per Windows dal sito web ACT www.act-connectivity.com.
- Decomprimere il file zip scaricato
- Installare il software sul PC/notebook facendo clic su 2port_USBKVMInstall.exe

3.4 Installazione su Mac

- Scaricare il software per Mac dal sito web ACT www.act-connectivity.com.
- Decomprimere il file zip scaricato
- Installare il software sul Mac/Macbook facendo clic su USBKVM Switcher 2 ports.pkg

Nota: La versione per Mac del software di commutazione KVM supporta solo Mac OS 10.4 (Tiger) e versioni successive. Le versioni precedenti di Mac OS potrebbero non funzionare bene con esso.

Nota: Il software di commutazione KVM supporta i sistemi operativi Windows e Mac OS. Per altre piattaforme OS come Linux, è comunque possibile utilizzare il tasto di scelta rapida della tastiera universale: BLOC SCORR + BLOC SCORR per passare tra i computer.

Tuttavia, questo tasto di scelta rapida per il cambio non è disponibile per Mac OS.

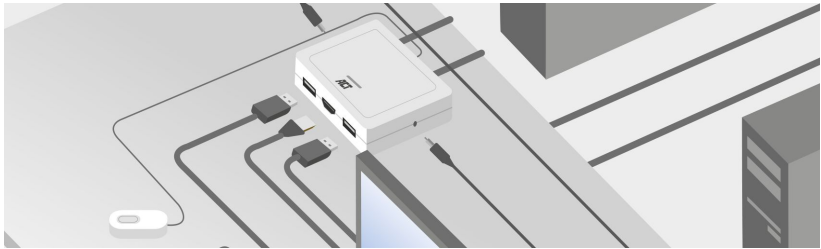
4.0 Funzionamento

Esistono tre metodi per controllare lo switch KVM per la selezione del computer e della porta audio/microfono: utilizzando il pulsante Switch (un telecomando cablato), il software di commutazione KVM o i tasti di scelta rapida della tastiera.

4.1 Pulsante Switch

Pulsante Switch (un telecomando cablato)

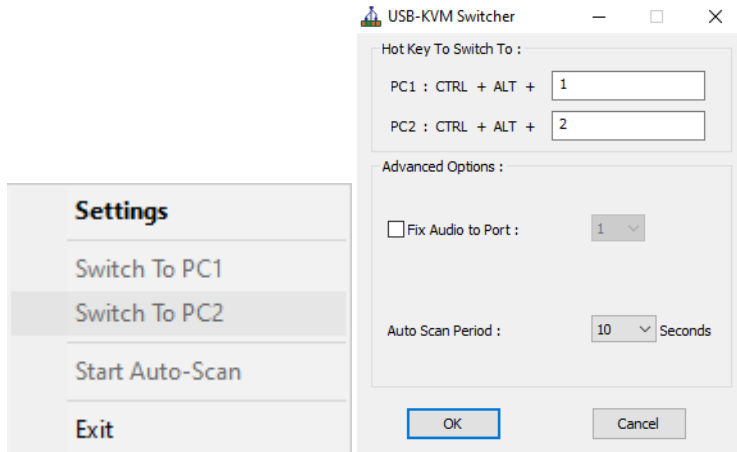
Il pulsante Switch è un telecomando cablato che consente un controllo diretto della commutazione. Basta premere il pulsante per commutare tra i computer.



4.2 Software di commutazione KVM per Windows

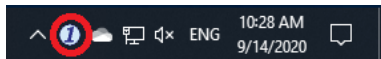
Software di commutazione KVM (piattaforma Windows)

Per il funzionamento del software i commutazione KVM, fare riferimento alla “Scheda di riferimento rapido”.



Windows: Menu operativo

Finestra di dialogo Configurazione



Nessun collegamento sotto tensione rilevato



Il canale del computer attivo attuale è sulla porta 1

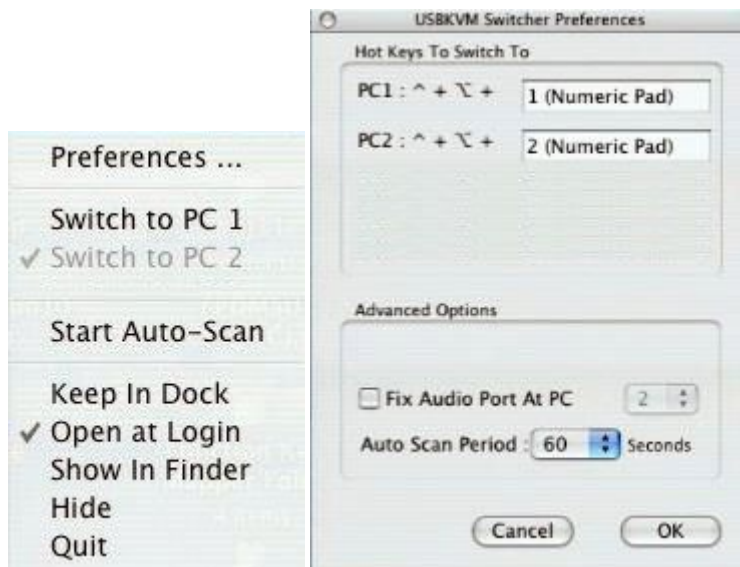


Il canale del computer attivo attuale è sulla porta 2

4.3 Software di commutazione KVM per Mac

Software di commutazione KVM (piattaforma Mac)

Per il funzionamento del software di commutazione KVM, fare riferimento alla “Scheda di riferimento rapido”.



Mac: Menu operativo

Finestra di dialogo Configurazione



Nessun collegamento sotto tensione rilevato



Il canale del computer attivo attuale è sulla porta 1



Il canale del computer attivo attuale è sulla porta 2

4.4 Tasti di scelta rapida della tastiera

Tasti di scelta rapida della tastiera

Per il funzionamento dei tasti di scelta rapida della tastiera, fare riferimento alla “Scheda di riferimento rapido”.

5.0 Scheda di riferimento rapido

Quick Switch Button Commands		Keyboard Hotkeys Commands	
Command	Quick Switch Button	Command	Keyboard Hotkeys
Select PC Port	Press the button to toggle between the two computers.	Select PC Port	Press 2 times Scroll Lock Each keystroke in hotkey sequence should be pressed within two seconds. Otherwise, the hotkey sequence will not be validated.
Switching Software Commands			
Command	Switching Software	Description	Description
Select PC Port	Right-click the KVM Switching Software icon to evoke the operation menu, then select whichever computer that is available for switching.	Select PC port	Select PC port
Next lower PC Port	Right-click the KVM Switching icon to evoke the operation menu, then select whichever computer that is available for switching.	Next lower PC port	Next lower PC port
Next higher PC Port	Right-click the KVM Switching icon to evoke the operation menu, then select whichever computer that is available for switching.	Next lower PC port	Next lower PC port
Define Hotkey Preceding Sequence	Right-click the KVM Switching icon to evoke the operation menu, and then select Settings (Windows) / Configuration Dialog Box (Mac OS).	User-definable hotkeys sequence for computer selection is "Ctrl +Alt+ [command key]". For Mac, instead of Scroll Lock key, you may use Userdefinable hotkey sequence to switch.	
Autoscan	Right-click the KVM Switching Software icon to evoke the operation menu, then select Start Auto-Scan to activate auto-scanning.	Starts Autoscan	
Autoscan with Programmable Delay Time	Right-click the KVM Switching Software icon to evoke the operation menu, then select a range of Auto-Scan Period.	Autoscan duration adjust to (10 – 60 seconds)	
Stop Autoscan	While auto-scanning, right-click the KVM Switching Software icon to evoke the operation menu, and then select Stop Auto-Scan to deactivate auto-scanning.	Stop Autoscan during scan mode	
Beeper	Right-click the KVM Switching Software icon to evoke the operation menu, then check the box "Turn on Buzzer".	Toggle Beeper on/off	
Keep in Dock (Mac only)	Right-click the KVM Switching Software icon to evoke the operation menu, and then select "Keep in Dock".	KVM switching icon will be on the system tray of your desktop	
Open at Login (Mac only)	Right-click the KVM Switching Software icon to evoke the operation menu, then select "Open at login".	Operate Switcher Software and login	
Fix Audio Port	Right-click the KVM Switching Software icon to evoke the operation menu, then check the box "Fix Audio Port at PC" and select the desired PC port.	Check this option and then select the computer to fix the audio/mic port to the selected computer. Once this option is checked, the audio/mic port will be fixed and become non-switchable.	

6.0 Frequently Asked Questions and other related information

Select **support** on the ACT website to find the latest frequently asked questions for your product. ACT will update these pages frequently to assure you have the most recent information. Check www.act-connectivity.com for more information about your product.

7.0 Service and support

This user manual has been carefully written by ACT's technical experts. If you have problems installing or using the product, please check the **support** link at the website www.act-connectivity.com.

8.0 Warning and points of attention



Due to laws, directives and regulations set out by the European parliament, some (wireless) devices could be subject to limitations concerning its use in certain European member states. In certain European member states the use of such devices could be prohibited. Contact your (local) government for more information about this limitations.

Always follow up the instructions in the manual*, especially where it concerns devices which need to be assembled.

Warning: In most cases this concerns an electronic device. Wrong/improper use may lead to (severe) injuries!

When you connect the device to the mains, make sure it will not be damaged or subject to (high) pressure.

A power socket is needed which should be close and easy accessible from the device.

Repairing of the device should be done by qualified ACT staff. Never try to repair the device yourself. The warranty immediately voids when products have undergone self-repair and/or by misuse. For extended warranty conditions, please visit our website at www.act-connectivity.com

Dispose of the device appropriately. Please follow your countries regulation for the disposal of electronic goods.

Please check below safety points carefully:

- Do not apply external force on the cables
- Do not unplug the device by pulling the power cable

- Do not place the device near heating elements
- Do not let the device come in contact with water or other liquids
- If there is any strange sound, smoke or odor, remove the device immediately from the power outlet.
- Do not put any sharp objects into the venting hole of a product
- Do not use any damaged cables (risk of electric shock)
- Keep the product out of reach of children
- Wipe off the product with soft fabric, not water mop.
- Keep the power plug and outlet clean
- Do not unplug the device from the power outlet with wet hands
- Unplug the device when you don't use it for a long time
- Use the device at a well ventilated place

**Tip: ACT manuals are written with great care. However, due to new technological developments it can happen that a printed manual does not longer contain the most recent information. If you are experiencing any problems with the printed manual or you cannot find what you are looking for, please always check our website www.act-connectivity.com first for the newest updated manual.*

*Frequently asked questions (FAQ). Consult **support** on our website www.act-connectivity.com and see if you can find the right information about your product here. It is highly advisable to consult the FAQ section first, the answer is often here.*

9.0 Warranty conditions

The ACT warranty applies to all ACT products. After buying a second-hand ACT product the remaining period of warranty is measured from the moment of purchase by the product's initial owner. ACT warranty applies to all ACT products and parts, indissolubly connected or mounted to the product it concerns. Power supply adapters, batteries, antennas and all other products not directly integrated in or connected to the main product or products of which, without reasonable doubt, can be assumed that wear and tear during use will show a different pattern than the main product, are not covered by the ACT warranty. Products are not covered by the ACT warranty when exposed to incorrect/improper use, external influences or when opening the service parts of the product by parties other than ACT. ACT may use refurbished materials for repair or replacement of your defective product. ACT cannot be held responsible for changes in network settings by internet providers. We cannot guarantee that the ACT networking product will keep working when settings are changed by the internet providers. ACT cannot guarantee the working of web services, apps and other third party content that is available through ACT products

When my product gets defective

Should you encounter a product rendered defective for reasons other than described above: Please contact your point of purchase for taking care of your defective product.

The logo for ACT, consisting of the letters 'ACT' in a bold, blue, sans-serif font.

www.act-connectivity.com

Trademarks: all brand names are trademarks and/or registered of their respective holders.

The information contained in this document has been created with the utmost care. No legal rights can be derived from these contents. ACT cannot be held responsible, nor liable for the information contained in this document.





AC7900/AC7910
KVM-Switch mit USB und Audio

DE

Manual

AC7900/AC7910 | KVM-Switch mit USB und Audio

Inhaltsverzeichnis

1.0 Einführung.....	2
1.1 Lieferumfang.....	2
2.0 KVM-Switch mit USB und Audio/Mikrofon	3
3.0 Installation.....	3
3.1 Zwischen Computern umschalten	4
3.2 Software.....	4
3.3 Windows-Installation.....	4
3.4 Mac-Installation.....	4
4.0 Bedienung.....	4
4.1 Umschalttaste	4
4.2 KVM-Umschalt-Software Windows.....	6
4.3 KVM-Umschalt-Software Mac.....	7
4.4 Tastatur-Tastenkombinationen	7
5.0 Kurzreferenzblatt.....	8
6.0 Frequently Asked Questions and other related information.....	9
7.0 Service and support.....	9
8.0 Warning and points of attention	9
9.0 Warranty conditions	11

1.0 Einführung

Glückwunsch zum Kauf dieses hochwertigen ACT-Produktes! Dieses Produkt wurde umfassend von ACTs technischen Experten geprüft. Falls Probleme mit diesem Produkt auftreten, sind Sie durch die ACT-Garantie abgesichert. Bitte bewahren Sie diese Anleitung und den Beleg an einem sicheren Ort auf.

Registrieren Sie Ihr Produkt nun unter www.act-connectivity.com und erhalten Sie Produktaktualisierungen!

1.1 Lieferumfang

Die folgenden Teile müssen im Lieferumfang enthalten sein:

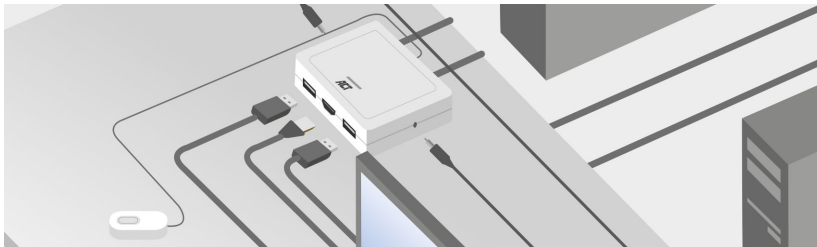
- AC7900/AC7910 KVM-Switch mit USB und Audio
- Schnellinstallationsanleitung

2.0 KVM-Switch mit USB und Audio/Mikrofon

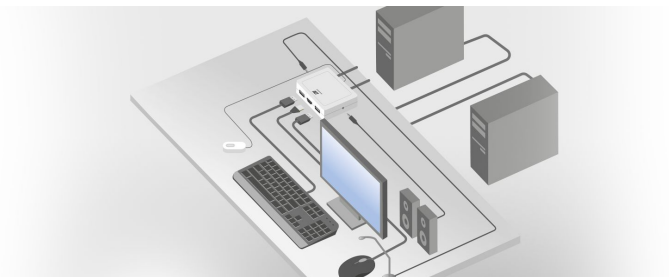
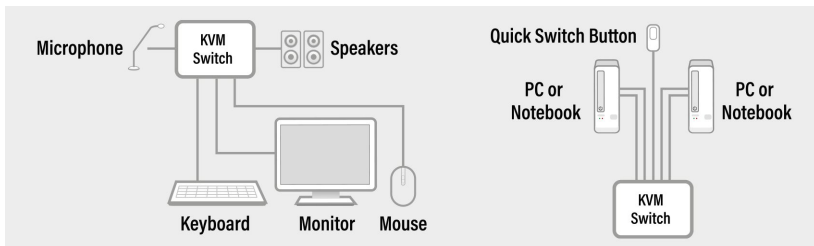
Der AC7900/AC7910 ist ein 2-Port-KVM-Switch mit USB und Audio/Mikrofon. Er ist mit 2 festen Kabelsets von USB-KVM- und Audio-/Mikrofon-Kombi-Kabeln ausgestattet. Ebenfalls erhältlich ist eine kabelgebundene Umschalttaste zum einfachen Umschalten zwischen zwei Computern. Sie ermöglicht Zugriff auf und Steuerung von zwei USB-fähigen Computern mit nur einer USB-Tastatur, einer Maus, einem Anzeigergerät, einem Lautsprecherset und einem Mikrofon.

3.0 Installation

Verbinden Sie HDMI/DisplayPort-Monitor, Tastatur, Maus, Lautsprecher und Mikrofon mit den freien Anschlüssen am KVM-Switch.



Verbinden Sie die angebrachten HDMI/DisplayPort-, USB- und Audiokabel mit Ihrem PC/Notebooks.



3.1 Zwischen Computern umschalten

Zum einfachen und schnellen Umschalten zwischen zwei Computern können Sie die Umschalttaste, die auf Ihrem PC/Notebook installierte Umschalt-Software oder die Tastatur-Tastenkombinationen nutzen.

3.2 Software

Bei Computern mit Windows/ Mac können Sie den KVM-Switch auch mit der verfügbaren Software von der ACT-Webseite www.act-connectivity.com umschalten.

3.3 Windows-Installation

- Laden Sie die Windows-Software von der ACT-Webseite www.act-connectivity.com herunter.
- Entpacken Sie die heruntergeladene ZIP-Datei
- Installieren Sie die Software auf Ihrem PC/Notebook, indem Sie 2port_USBKVMInstall.exe anklicken

3.4 Mac-Installation

- Laden Sie die Mac-Software von der ACT-Webseite www.act-connectivity.com herunter.
- Entpacken Sie die heruntergeladene ZIP-Datei
- Installieren Sie die Software auf Ihrem Mac/MacBook, indem Sie USBKVM Switcher 2 ports.pkg anklicken

Hinweis: Die Mac-Version der KVM-Umschalt-Software unterstützt nur Mac OS 10.4 (Tiger) und aktueller. Frühere Versionen von Mac OS funktionieren damit möglicherweise nicht bzw. nicht richtig.

Hinweis: Die KVM-Umschalt-Software unterstützt sowohl Windows als auch Mac OS. Bei anderen Betriebssystemplattformen wie Linux können Sie die universelle Tastatur-Tastenkombination zum Umschalten des Computers weiterhin nutzen – Scroll-Sperre + Scroll-Sperre.

Allerdings ist die Umschalt-Tastenkombination bei Mac OS nicht verfügbar.

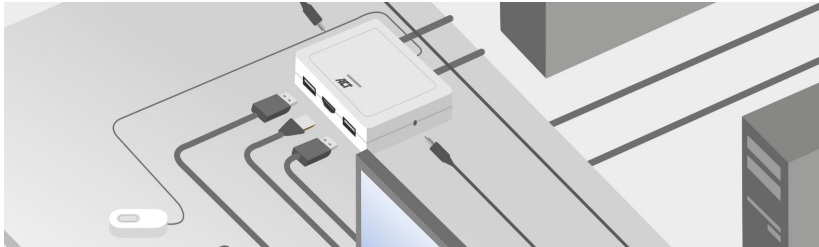
4.0 Bedienung

Es gibt drei Methoden zur Steuerung Ihres KVM-Switch für Computer- und Audio-/Mikrofonanschluss-Auswahl: Umschalttaste (eine Kabelfernbedienung), KVM-Umschalt-Software oder Tastatur-Tastenkombinationen.

4.1 Umschalttaste

Umschalttaste (eine Kabelfernbedienung)

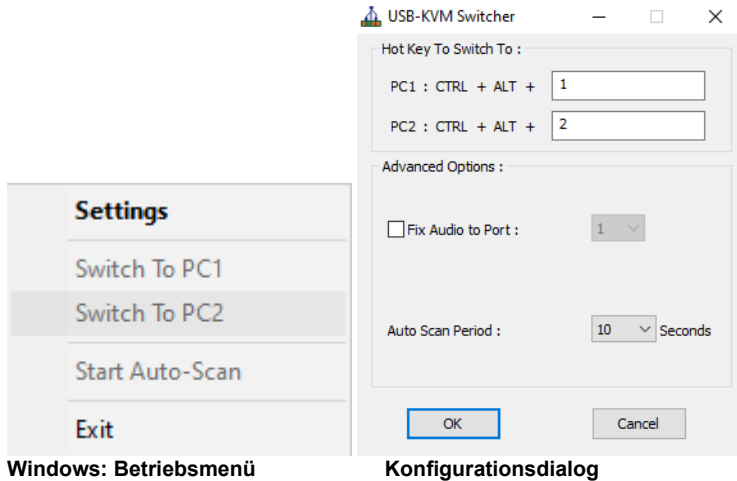
Die Umschalttaste ist eine Kabelfernbedienung, mit der Sie direkt umschalten können. Drücken Sie zum Umschalten zwischen zwei Computern einfach die Taste.



4.2 KVM-Umschalt-Software Windows

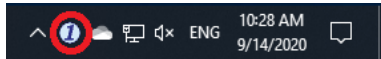
KVM-Umschalt-Software (Windows-Plattform)

Bitte beachten Sie zur Bedienung der KVM-Umschalt-Software das „[Kurzreferenzblatt](#)“.



Windows: Betriebsmenü

Konfigurationsdialog



Keine spannungsführende Verbindung erkannt



Aktueller aktiver Computerkanal ist an Anschluss 1

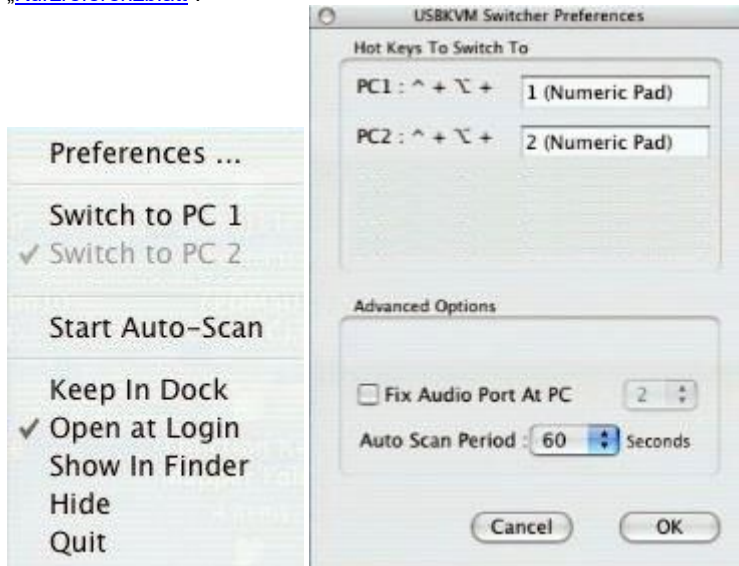


Aktueller aktiver Computerkanal ist an Anschluss 2

4.3 KVM-Umschalt-Software Mac

KVM-Umschalt-Software (Mac-Plattform)

Bitte beachten Sie zur Bedienung der KVM-Umschalt-Software das „[Kurzreferenzblatt](#)“.



Mac: Betriebsmenü

Konfigurationsdialog



Keine spannungsführende Verbindung erkannt



Aktueller aktiver Computerkanal ist an Anschluss 1



Aktueller aktiver Computerkanal ist an Anschluss 2

4.4 Tastatur-Tastenkombinationen

Tastatur-Tastenkombinationen

Informationen zur Bedienung der Tastatur-Tastenkombinationen finden Sie im „[Kurzreferenzblatt](#)“.

5.0 Kurzreferenzblatt

Quick Switch Button Commands		Keyboard Hotkeys Commands	
Command	Quick Switch Button	Command	Keyboard Hotkeys
Select PC Port	Press the button to toggle between the two computers.	Select PC Port	Press 2 times Scroll Lock Each keystroke in hotkey sequence should be pressed within two seconds. Otherwise, the hotkey sequence will not be validated.
Switching Software Commands			
Command	Switching Software	Description	Description
Select PC Port	Right-click the KVM Switching Software icon to evoke the operation menu, then select whichever computer that is available for switching.	Select PC port	Select PC port
Next lower PC Port	Right-click the KVM Switching icon to evoke the operation menu, then select whichever computer that is available for switching.	Next lower PC port	Next lower PC port
Next higher PC Port	Right-click the KVM Switching icon to evoke the operation menu, then select whichever computer that is available for switching.	Next lower PC port	Next lower PC port
Define Hotkey Preceding Sequence	Right-click the KVM Switching icon to evoke the operation menu, and then select Settings (Windows) / Configuration Dialog Box (Mac OS).	User-definable hotkeys sequence for computer selection is "Ctrl +Alt+ [command key]". For Mac, instead of Scroll Lock key, you may use Userdefinable hotkey sequence to switch.	
Autoscan	Right-click the KVM Switching Software icon to evoke the operation menu, then select Start Auto-Scan to activate auto-scanning.	Starts Autoscan	
Autoscan with Programmable Delay Time	Right-click the KVM Switching Software icon to evoke the operation menu, then select a range of Auto-Scan Period.	Autoscan duration adjust to (10 – 60 seconds)	
Stop Autoscan	While auto-scanning, right-click the KVM Switching Software icon to evoke the operation menu, and then select Stop Auto-Scan to deactivate auto-scanning.	Stop Autoscan during scan mode	
Beeper	Right-click the KVM Switching Software icon to evoke the operation menu, then check the box "Turn on Buzzer".	Toggle Beeper on/off	
Keep in Dock (Mac only)	Right-click the KVM Switching Software icon to evoke the operation menu, and then select "Keep in Dock".	KVM switching icon will be on the system tray of your desktop	
Open at Login (Mac only)	Right-click the KVM Switching Software icon to evoke the operation menu, then select "Open at login".	Operate Switcher Software and login	
Fix Audio Port	Right-click the KVM Switching Software icon to evoke the operation menu, then check the box "Fix Audio Port at PC" and select the desired PC port.	Check this option and then select the computer to fix the audio/mic port to the selected computer. Once this option is checked, the audio/mic port will be fixed and become non-switchable.	

6.0 Frequently Asked Questions and other related information

Select **support** on the ACT website to find the latest frequently asked questions for your product. ACT will update these pages frequently to assure you have the most recent information. Check www.act-connectivity.com for more information about your product.

7.0 Service and support

This user manual has been carefully written by ACT's technical experts. If you have problems installing or using the product, please check the **support** link at the website www.act-connectivity.com.

8.0 Warning and points of attention



Due to laws, directives and regulations set out by the European parliament, some (wireless) devices could be subject to limitations concerning its use in certain European member states. In certain European member states the use of such devices could be prohibited. Contact your (local) government for more information about this limitations.

Always follow up the instructions in the manual*, especially where it concerns devices which need to be assembled.

Warning: In most cases this concerns an electronic device. Wrong/improper use may lead to (severe) injuries!

When you connect the device to the mains, make sure it will not be damaged or subject to (high) pressure.

A power socket is needed which should be close and easy accessible from the device.

Repairing of the device should be done by qualified ACT staff. Never try to repair the device yourself. The warranty immediately voids when products have undergone self-repair and/or by misuse. For extended warranty conditions, please visit our website at www.act-connectivity.com

Dispose of the device appropriately. Please follow your countries regulation for the disposal of electronic goods.

Please check below safety points carefully:

- Do not apply external force on the cables
- Do not unplug the device by pulling the power cable

- Do not place the device near heating elements
- Do not let the device come in contact with water or other liquids
- If there is any strange sound, smoke or odor, remove the device immediately from the power outlet.
- Do not put any sharp objects into the venting hole of a product
- Do not use any damaged cables (risk of electric shock)
- Keep the product out of reach of children
- Wipe off the product with soft fabric, not water mop.
- Keep the power plug and outlet clean
- Do not unplug the device from the power outlet with wet hands
- Unplug the device when you don't use it for a long time
- Use the device at a well ventilated place

**Tip: ACT manuals are written with great care. However, due to new technological developments it can happen that a printed manual does not longer contain the most recent information. If you are experiencing any problems with the printed manual or you cannot find what you are looking for, please always check our website www.act-connectivity.com first for the newest updated manual.*

*Frequently asked questions (FAQ). Consult **support** on our website www.act-connectivity.com and see if you can find the right information about your product here. It is highly advisable to consult the FAQ section first, the answer is often here.*

9.0 Warranty conditions

The ACT warranty applies to all ACT products. After buying a second-hand ACT product the remaining period of warranty is measured from the moment of purchase by the product's initial owner. ACT warranty applies to all ACT products and parts, indissolubly connected or mounted to the product it concerns. Power supply adapters, batteries, antennas and all other products not directly integrated in or connected to the main product or products of which, without reasonable doubt, can be assumed that wear and tear during use will show a different pattern than the main product, are not covered by the ACT warranty. Products are not covered by the ACT warranty when exposed to incorrect/improper use, external influences or when opening the service parts of the product by parties other than ACT. ACT may use refurbished materials for repair or replacement of your defective product. ACT cannot be held responsible for changes in network settings by internet providers. We cannot guarantee that the ACT networking product will keep working when settings are changed by the internet providers. ACT cannot guarantee the working of web services, apps and other third party content that is available through ACT products

When my product gets defective

Should you encounter a product rendered defective for reasons other than described above: Please contact your point of purchase for taking care of your defective product.

The logo for ACT, consisting of the letters 'ACT' in a bold, blue, sans-serif font.

www.act-connectivity.com

Trademarks: all brand names are trademarks and/or registered of their respective holders.

The information contained in this document has been created with the utmost care. No legal rights can be derived from these contents. ACT cannot be held responsible, nor liable for the information contained in this document.





AC7900/AC7910
KVM Switch - USB és Audio

hu

Használati utasítás

AC7900/AC7910 | KVM Switch - USB és Audio

Tartalom

1.0 Bevezetés	2
1.1 Csomag tartalma	2
2.0 KVM switch - USB és Audio/Mic	3
3.0 Telepítés	3
3.1 Váltás a számítógépek között.....	4
3.2 Software.....	4
3.3 Windows telepítés.....	4
3.4 Mac telepítés	4
4.0 Működés	4
4.1 Kapcsoló gomb	5
4.2 KVM kapcsoló Software Windows	6
4.3 KVM kapcsoló Software MAC.....	7
4.4 Billentyűzet gyorsbillentyűi.....	7
5.0 Rövid referencia ismertető	8
6.0 Gyakran ismételt kérdések és egyéb információk	9
7.0 Szervíz és támogatás	9
8.0 Figyelmeztetések és felhívások	9
9.0 Garanciális feltételek.....	11

1.0 Bevezetés

Gratulálunk ennek a minőségi ACT terméknek a megvásárlásához! A terméket az ACT szakemberei alapos tesztelésnek vetették alá. Probléma esetén az ACT jótállást biztosít a termékre. Kérjük, hogy a kézikönyvet és a nyugtát őrizze meg, és tartsa biztonságos helyen.

Regisztrálja termékét a www.act-connectivity.com oldalon és nézze meg a termékkel kapcsolatos frissítéseket!.

1.1 Csomag tartalma

A csomagolásban a következő alkatrészek találhatók:

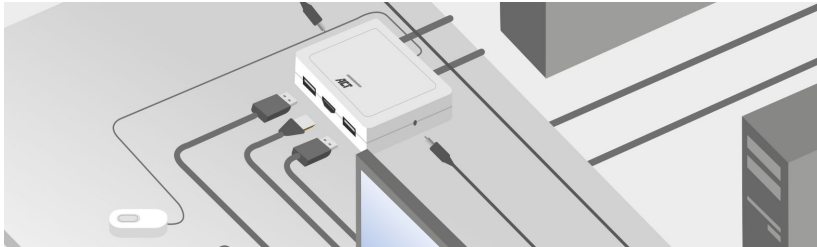
- AC7900/AC7910 KVM Switch - USB és Audio
- Gyors telepítési útmutató

2.0 KVM switch - USB és Audio/Mic

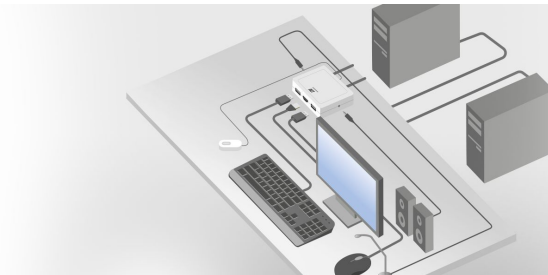
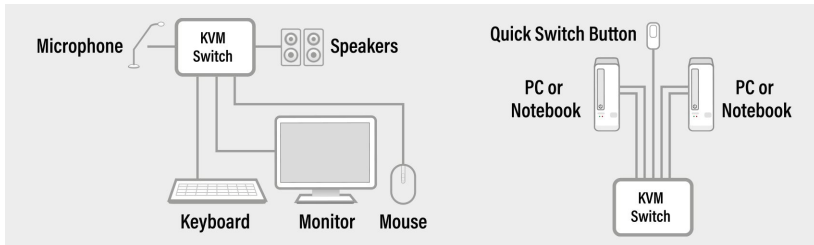
Az AC7900/AC7910 egy 2 portos KVM switch USB-vel és audio/mikrofonnal. 2 fix kábelkészlettel rendelkezik, melyek USB KVM és Audio/Mic kombinált kábeleket tartalmaznak. Rendelkezésre áll egy vezetékes kapcsoló gomb is, mely lehetővé teszi két számítógép közötti egyszerű váltást. A termékkel, két USB kompatibilis számítógép elérése, vezérlése válik lehetővé, egy USB billentyűzettel, egerrel, kijelzővel, hangszórókkal és mikrofonnal.

3.0 Telepítés

Csatlakoztassa a HDMI/DisplayPort monitort, a billentyűzetet, egeret, hangszórókat és mikrofont a KVM switch elérhető portjaihoz.



Csatlakoztassa a mellékelt HDMI/DisplayPort, USB és audio kábeleket mindkét számítógépéhez/notebookhoz.



3.1 Váltás a számítógépek között

A két számítógép közötti egyszerű és gyors váltáshoz használhatja a kapcsoló gombot, a számítógépére/notebookjára telepített kapcsoló szoftvert vagy a billentyűzet gyorsbillentyűit.

3.2 Software

Windows/Mac operációs rendszert futtató számítógépek esetén a KVM switchet átválthatja az ACT www.act-connectivity.com. webhelyen elérhető software segítségével is.

3.3 Windows telepítés

- Töltse le a Windows szoftvert az ACT webhelyéről www.act-connectivity.com.
- Csomagolja ki a letöltött zip fájlt
- A 2port_USBKVMInstall.exe -re kattintva telepítse a szoftvert PC-jére/Notebookjára

3.4 Mac telepítés

- Töltse le a Windows szoftvert az ACT webhelyéről www.act-connectivity.com.
- Csomagolja ki a letöltött zip fájlt
- Telepítse a szoftvert a Mac/Macbook számítógépére az USBKVM Switcher 2 ports.pkg -re kattintva

Megjegyzés: A KVM Switching Software Mac verziója csak a Mac OS 10.4 (Tiger) és újabb verziókat támogatja. Előfordulhat, hogy a Mac OS korábbi verziói nem működnek jól.

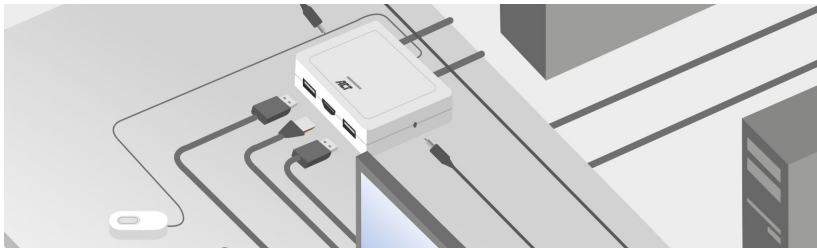
Megjegyzés: A KVM Switching Software mind a Windows, mind a Mac OS operációs rendszereket támogatja. Más operációs rendszer-platformok, például a Linux esetében továbbra is használhatja az univerzális billentyűzet gyorsbillentyűt - Scroll Lock + Scroll Lock a számítógép váltásához. Ez a kapcsoló gyorsbillentyű azonban nem érhető el Mac OS rendszeren.

4.0 Működés

Három módszer létezik a KVM switch vezérléséhez a számítógép és az audio/mikrofon port kiválasztásához: a Kapcsológomb (vezetékes távirányító), a KVM switch software vagy a Billentyűzet gyorsbillentyűinek használata.

4.1 Kapcsoló gomb

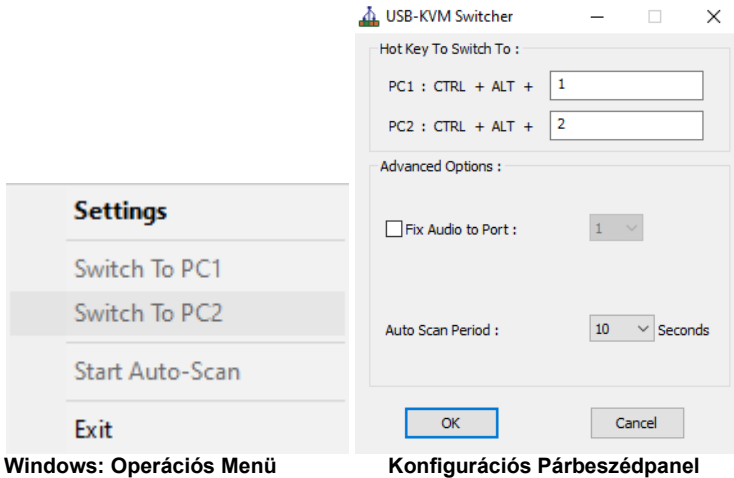
Kapcsoló gomb (vezetékes távirányító) A kapcsoló gomb egy vezetékes távirányító, amely lehetővé teszi a közvetlen kapcsolási vezérlést. Egyszerűen nyomja meg a gombot a két számítógép közötti váltáshoz.



4.2 KVM kapcsoló Software Windows

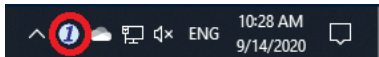
KVM kapcsoló software (Windows platform)

A KVM kapcsoló software működésével kapcsolatban olvassa el a „Rövid referencia ismertető”-t.



Windows: Operációs Menü

Konfigurációs Párbeszédpanel



Nincs észlelhető élő kapcsolat



A jelenlegi aktív számítógépes csatorna az 1. porton van

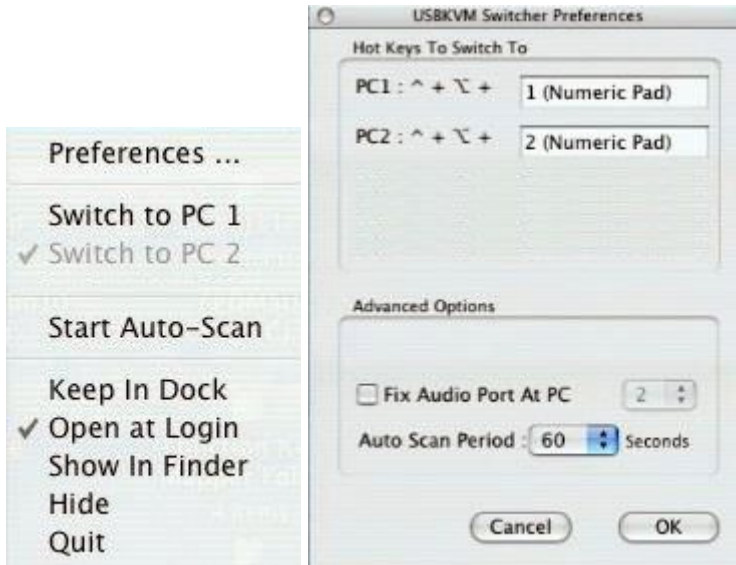


A jelenlegi aktív számítógépes csatorna az 2. porton van

4.3 KVM kapcsoló Software MAC

KVM kapcsoló software (Mac platform)

A KVM kapcsoló software működésével kapcsolatban olvassa el a „Rövid referencia ismertető”-t.



Mac: Operációs Menü

Konfigurációs Párbeszédpanel



Nincs észlelhető élő kapcsolat



A jelenlegi aktív számítógépes csatorna az 1. porton van



A jelenlegi aktív számítógépes csatorna az 2. porton van

4.4 Billentyűzet gyorsbillentyűi

Billentyűparancsok A billentyűzet gyorsbillentyűvel történő működésével kapcsolatban olvassa el a „Rövid referencia ismertető”-t.

5.0 Rövid referencia ismertető

Quick Switch Button Commands		Keyboard Hotkeys Commands	
Command	Quick Switch Button	Command	Keyboard Hotkeys
Select PC Port	Press the button to toggle between the two computers.	Select PC Port	Press 2 times Scroll Lock Each keystroke in hotkey sequence should be pressed within two seconds. Otherwise, the hotkey sequence will not be validated.
Switching Software Commands			
Command	Switching Software	Description	Description
Select PC Port	Right-click the KVM Switching Software Icon to evoke the operation menu, then select whichever computer that is available for switching.	Select PC Port	Select PC port
Next lower PC Port	Right-click the KVM Switching Icon to evoke the operation menu, then select whichever computer that is available for switching.	Next lower PC port	Next lower PC port
Next higher PC Port	Right-click the KVM Switching Icon to evoke the operation menu, then select whichever computer that is available for switching.	Next lower PC port	Next lower PC port
Define Hotkey Preceding Sequence	Right-click the KVM Switching Icon to evoke the operation menu, and then select Settings (Windows) / Configuration Dialog Box (Mac OS).	User-definable hotkeys sequence for computer selection is "Ctrl +Alt+ [command key]". For Mac, instead of Scroll Lock key, you may use Userdefinable hotkey sequence to switch.	
Autoscan	Right-click the KVM Switching Software Icon to evoke the operation menu, then select Start Auto-Scan to activate auto-scanning.	Starts Autoscan	
Autoscan with Programmable Delay Time	Right-click the KVM Switching Software Icon to evoke the operation menu, then select a range of Auto-Scan Period .	Autoscan duration adjust to (10 – 60 seconds)	
Stop Autoscan	While auto-scanning, right-click the KVM Switching Software Icon to evoke the operation menu, and then select Stop Auto-Scan to deactivate auto-scanning.	Stop Autoscan during scan mode	
Beeper	Right-click the KVM Switching Software Icon to evoke the operation menu, then check the box "Turn on Buzzer".	Toggle Beeper on/off	
Keep in Dock (Mac only)	Right-click the KVM Switching Software Icon to evoke the operation menu, and then select "Keep in Dock".	KVM switching icon will be on the system tray of your desktop	
Open at Login (Mac only)	Right-click the KVM Switching Software Icon to evoke the operation menu, then select "Open at login".	Operate Switcher Software and login	
Fix Audio Port	Right-click the KVM Switching Software Icon to evoke the operation menu, then check the box "Fix Audio Port at PC" and select the desired PC port.	Check this option and then select the computer to fix the audio/mic port to the selected computer. Once this option is checked, the audio/mic port will be fixed and become non-switchable.	

6.0 Gyakran ismételt kérdések és egyéb információk

A termékére vonatkozó, legfrissebb GYIK a termék támogatási oldalán található. Az ATC rendszeresen frissíti ezeket az oldalakat, hogy Ön naprakész lehessen. Látogasson a www.act-connectivity.com oldara további információért.

7.0 Szervíz és támogatás

Ezt a Használati Utasítást az ACT műszaki szakértői készítették. Ha problémája van a termék telepítésével vagy használatával, ellenőrizze a webhelyen található támogatási **linket** www.act-connectivity.com.

8.0 Figyelmeztetések és felhívások



Az Európai Parlament törvényei, irányelvei és jogszabályai értelmében bizonyos (vezeték nélküli) eszközök használata az Európai Unió bizonyos tagállamaiban korlátozások alá esik. Az ilyen eszközök használata az Európai Unió bizonyos tagállamaiban tilos lehet. A korlátozásokat illetően érdeklődjön a területileg illetékes önkormányzatnál.

Mindig tartsa be a kézikönyv utasításait*, főleg az összeszerelést igénylő eszközök tekintetében.

Figyelem: Ez a legtöbb esetben az elektronikus eszközökre is vonatkozik. A hibás/helytelen használat (súlyos) sérüléshez vezethet!

Amikor a készüléket csatlakoztatja a hálózathoz, győződjön meg róla, hogy nem sérült-e vagy nincs kitéve (magas) nyomásnak.

Olyan hálózati csatlakozóra van szüksége, mely közel van és könnyen megközelíthető az eszköz számára.

A javítást csak az ATC képzett szakemberei végezhetik. Soha ne próbálja megjavítani a készüléket. A garancia azonnal érvényét veszíti, ha a terméket saját maga próbálja megjavítani vagy azt rendeltetésellenesen használják. A kiterjesztett garanciafeltételeket megtekintheti weboldalunkon: www.act-connectivity.com

Az eszköz megfelelő módú megsemmisítéséhez, kérjük, kövesse országa elektronikai cikkek megsemmisítésére vonatkozó szabályozását.

Kérjük, ellenőrizze figyelmesen az alábbi biztonsági pontokat:

- Ne alkalmazzon külső erőkiejtést a kábelekre.
- Ne húzza ki a készüléket a tápkábel kihúzásával.
- Ne helyezze a készüléket hősugárzó elemek közelébe.
- Ne hagyja, hogy a készülék érintkezzen vízzel vagy egyéb folyadékokkal.

- Ha furcsa hangot, füstöt vagy szagot észlel, távolítsa el az eszközt azonnal a hálózati aljzatból.
- Ne tegyen semmilyen éles tárgyat a termék szellőző nyílásába.
- Ne használjon sérült kábeleket (áramütés veszély)
- A terméket tartsa távol gyermekek elől.
- A terméket puha anyagú, vízmentes ronggyal törölje le.
- Tartsa a tápkábelt és a konnektort tisztán.
- Ne húzza ki a készüléket a konnektorból nedves kézzel.
- Húzza ki a készüléket, ha nem használja hosszabb ideig.
- Használja a készüléket egy jól szellőző helyen

**Megjegyzés: Az ACT használati utasításai a legnagyobb gonddal készültek. Ezzel együtt, a technológiai fejlesztéseknek köszönhetően előfordulhat, hogy a kinyomtatott használati utasítás nem a legújabb információkat tartalmazza. Habármilyen problémát tapasztal a nyomtatott használati utasítással, elsőként kérjük ellenőrizze a weboldalunkat, www.act-connectivity.com, ahol megtalálhatja a legfrissebb használati utasítást.*

Ezen kívül a gyakran feltett kérdések részben (FAQ Section) is találhat válaszokat, megoldásokat a problémákra. Kiemelten javasoljuk, hogy a termék honlapján ezt a részt is tanulmányozza át. Nagyon gyakran itt található a válasz kérdéseire.

9.0 Garanciális feltételek

Az ATC garanciája valamennyi ATC termékre érvényes. Ha használt ATC terméket vásárolt, a garancia fennmaradó időtartama a termék első vásárlója általi vásárlás időpontjától számítandó. Az ATC garanciája valamennyi ATC termékre, illetve a termékre nem bontható módon csatlakoztatott és/vagy szerelt alkatrészekre érvényes. Az ATC garanciája nem érvényes a hálózati tápegységekre, akkumulátorokra, antennákra és az egyéb termékekre, amelyek nincsenek egybeépítve a főtermékkel vagy közvetlenül csatlakoztatva hozzá és/vagy azon termékekre, amelyekről minden kétséget kizáróan feltételezhető, hogy a főtermék rendes elhasználódásától eltérő elhasználódást mutatnak. Az ATC garanciája nem vonatkozik azon termékekre, amelyeket helytelen módon/rendeltetésével ellentétesen használtak vagy külső befolyásnak tettek ki és/vagy az ATC cégtől eltérő fél nyitott ki. Az ATC a hibás termék javításához vagy cseréjéhez javított anyagokat is felhasználhat. Az ATC nem tehető felelőssé az Internetszolgáltató általi hálózati beállítások változásokért. Nem garantálhatjuk, hogy az ATC hálózati termék akkor is működni fog, ha az Internetszolgáltató megváltoztatja a beállításokat. Az ATC nem garantálja a webszolgáltatások, alkalmazások és független felek tartalmainak működését - amelyeket az Eminent Ewent termékek által tettünk elérhetővé.

Ha a termék meghibásodik

Ha a termék a fentiekén kívül más módon meghibásodik: Kérjük, vegye fel a kapcsolatot a forgalmazási ponttal, hogy megszervezzék a hibás termék javítását.