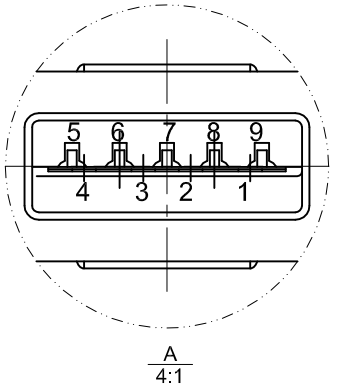
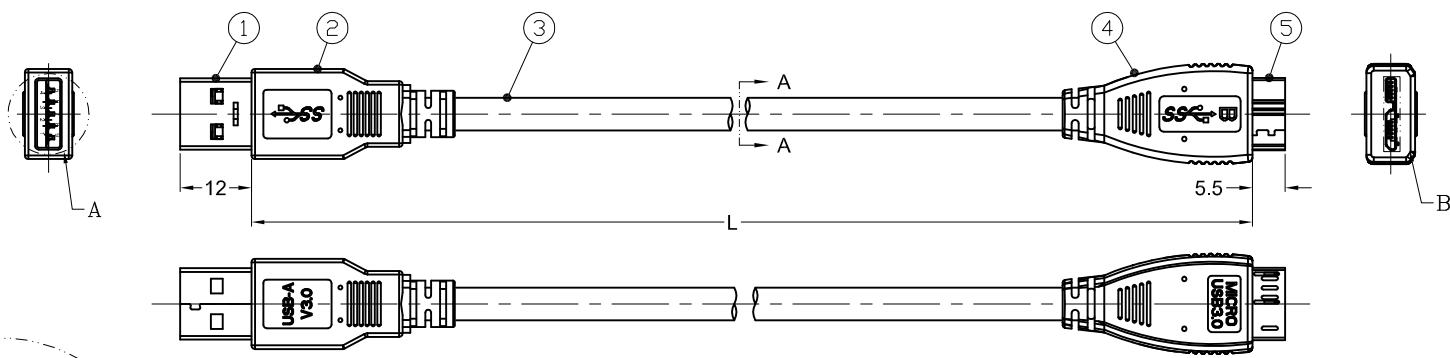
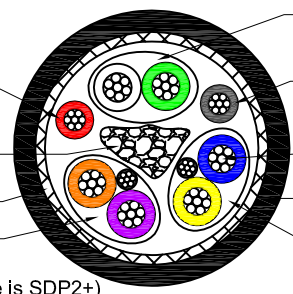
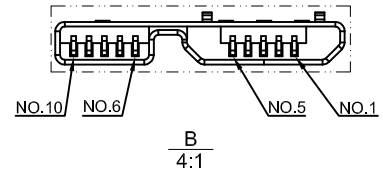


DATE	REV.	REVISION	DRAFTING	CHECKED	APPROVED
2011.04.12	A/0	NEW	LUMIAO	ZXL	LANDER



WHITE INK MARKING:USB 3.0 CABLE 28AWGx3P+28AWGx2C E139315-F5 AWM 2725 80°C 30V VW-1



UTP (White wire is D-,Green wire is D+)  
 Power wire Red wire is VBUS  
 Filler optional  
 Braiding:Al-Mg  
 SDP2 STP Twisted Pair2 (Purple wire is SDP2-,Orange wire is SDP2+)  
 SDP1 STP Twisted Pair1 (Blue wire is SDP1-,Yellow wire is SDP1+)  
 Power wire Black wire is Gnd  
 Conductor:Tinner Copper  
 Jacket:PVC BLACK

SECTION A-A

Standard_A Plug		Wire		Micro_B Plug	
Pin	Signal Name	Wire	Signal Name	Pin	Signal Name
1	VBUS	1	PWR	1	VBUS
2	D-	2	UTP_D-	2	D-
3	D+	3	UTP_D+	3	D+
4	GND	4	GND_PWRrt	5	GND
5	SSRX-	5	SDP1-	6	SSTX-
6	SSRX+	6	SDP1+	7	SSTX+
7	GND_Drain	7, 10	SDP1_Drain SDP2_Drain	8	GND_Drain
8	SSTX-	8	SDP2-	9	SSRX-
9	SSTX+	9	SDP2+	10	SSRX+
--	--	--	--	4	ID
Shell	Shield	Braid	Shield	Shell	Shield

Customer's P/N	Length	Description
SB 3028	0.5M	USB 3.0 A Male-MicroB Male
SB 3029	1M	USB 3.0 A Male-MicroB Male
SB 3030	1.5M	USB 3.0 A Male-MicroB Male
SB 3031	2M	USB 3.0 A Male-MicroB Male

Length(M)	Tolerances(M)
0.5	±0.015
1	±0.015
1.5	±0.02
2	±0.02

Unless specified on the drawing, tolerances are per the follows :  
 X. ± 0.20  
 .X ± 0.10  
 .XX ± 0.05

1	Terminal:Phos/Brass,G/F	USB 3.0 Micro B Male Plug	5
1	PVC: BLACK	Molding_Micro B Male	4
1	USB 3.0 CABLE 3P*28AWG+2C*28AWG	USB 3.0 Cable 28AWG	3
1	PVC: BLACK	Molding_A Male	2
1	Terminal:Phos/Brass,G/F	USB3.0 A Male Plug	1
Q'ty	SPECIFICATION	ITEM	NO

<b>AC</b>		DRAW. NO		DESC.		USB 3.0 A TYPE MALE TO MICRO USB 3.0 B TYPE MALE			
DEPARTMENT		RD	DRAW		LUMIAO	DATE	2011.04.12		
SCALE		N/A	CHECKED		ZXL	DATE	2011.04.12		
UNIT		mm	APPROVED		LANDER	DATE	2011.04.12		
3RD		SHEET		1 OF 1					

Material	Part Number	Note
----------	-------------	------