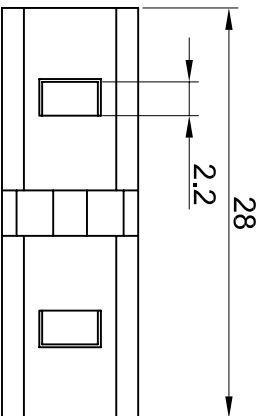
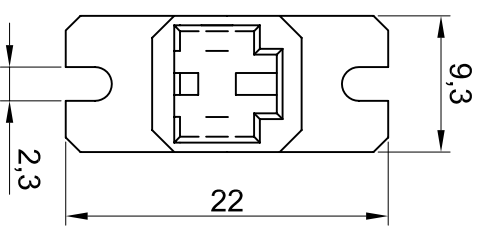
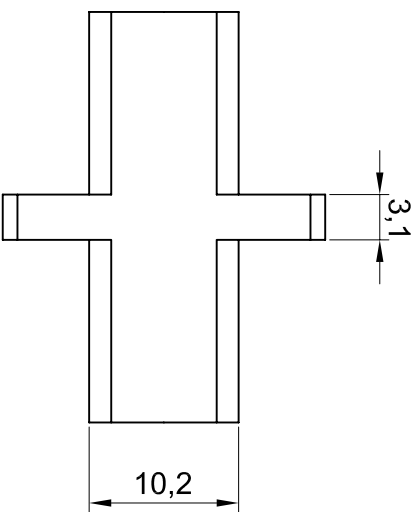


MTRJ~MTRJ Adapter Plastic housing black, No sleeve



- NOTE:
- 1. Insertion Loss: < 0.2dB(MAX)
  - 2. Operating Temperature: -40°C~+75°C  
Storage Temperature: -40°C~75°C
  - 3. Compliant with GR-1435-CORE
  - 4. Compliant with IEC874-7

**EA6002**

Description: MTRJ~MTRJ Adapter Plastic housing black, No sleeve

Part No.:53416.1

Drawing No.:

Unit:mm

Page : 1 of 1