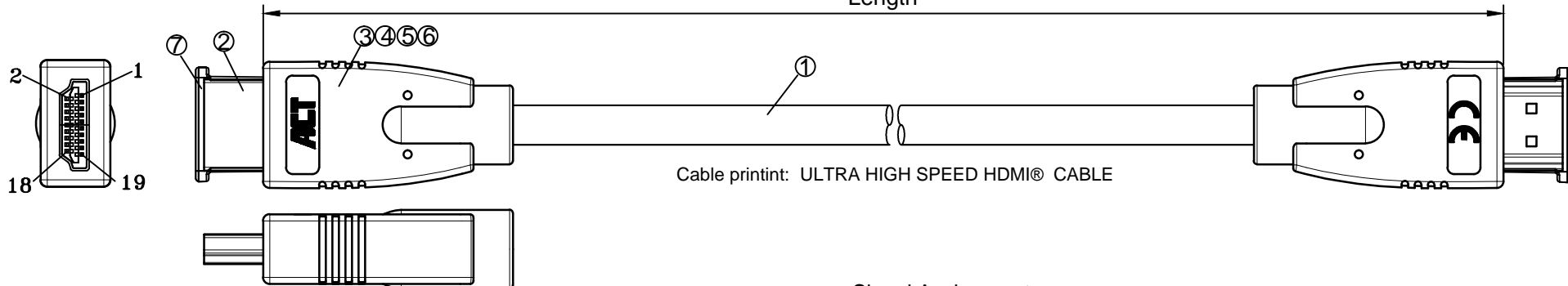


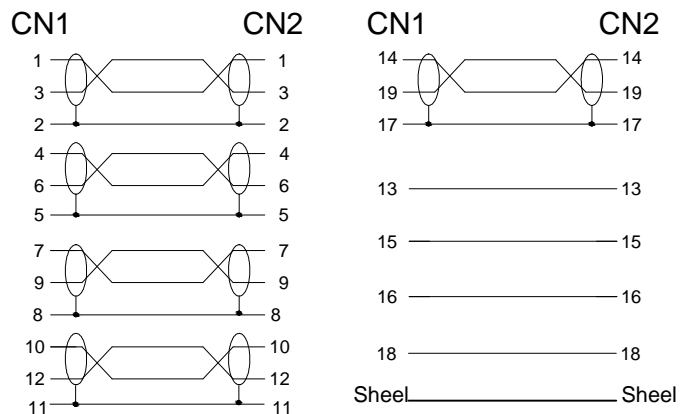
REV.	REVISED DESCRIPTION	DATE	CHECKED
A0	FIRST RELEASE	2019/09/27	

Length



Cable printint: ULTRA HIGH SPEED HDMI® CABLE

Signal Assignment



Remark:

- 1.100% Open/Short Test
- 2.Conductive Resistance:10ohms MAX
- 3.Insulation Resistance:5M ohm MIN.
- 4.HI-POT:DC 300V/10MS.
- 5.The product is CE/RoHS compliant/Reach.
- 6.Resolution:8K@60Hz

Remark:

- 1.100% Open/Short Test
- 2.Conductive Resistance:10ohms MAX
- 3.Insulation Resistance:5M ohm MIN.
- 4.HI-POT:DC 300V/10MS.
- 5.The product is RoHS compliant.
- 6.Support 1080P/3D/8K@60Hz

Item NO.	Length(m)
AK-3910	3.0m

⑦		HDMI Protective Cap, PE	2PCS	
⑥	External Mold	Outer Mould 45P PVC, Black		
⑤	Copper Foil	Double sided conductor Copper Foil W5xL40MM	2PCS	
④	Shielding Shell	Shielding Shell,tinplate	2PCS	
③	Bracket	HDMI2.1V Bracket PA66	2PCS	
②	Connector	HDMI A PLUG PIN, Gold-Plated	2PCS	
①	Cable	28AWG 2.1V (1/0.32BC x 1P + D1/0.254TC + AL-Foil + HM-Mylar) x 5C + 1/0.254BC x 3C + 1/0.32BC x 1C + AL-foil + D1/0.254TC + 160/0.12AL, OD=7.3 Black PVC		
ITEM	DESCRIPTIONS & SPECIFICATIONS		QTY	REMARK

TOLERANCES UNLESS OTHERWISE STATED	
X.	= ± 1
.X	= ± 0.2
.XX	= ± 0.1

ERP NO.:		SAMPLE DWG NO.:	
DOC No.:		REVISION	A0
CUSTOMER:		UNIT	mm
CUSTOMER P/N:		SCALE	NO
DESCRIPTION		PAGE NO	1/1
		DATE	2019/09/27
APPROVAL		CHECKED	
		DRAWN	