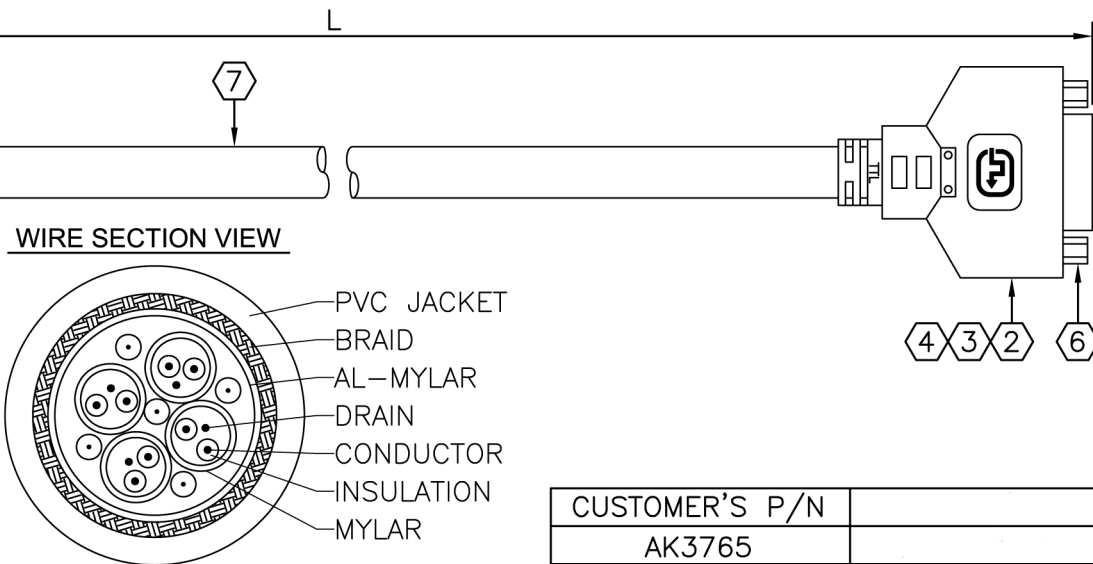
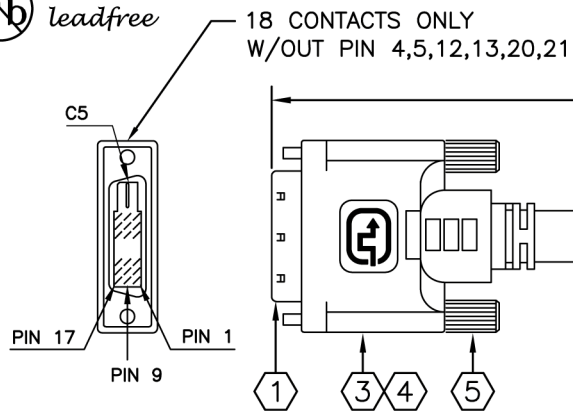


ALL MATERIAL ARE RoHS AND CALIFORNIA PROP.65 COMPLIANT

CUSTOMER'S APPROVAL: _____ DATE: _____
 FIRST ARTICLE SAMPLE REQUIRED: YES, NO.



PINOUT CONFIGURATION

DVI MALE		DVI FEMALE	
TMDS DATA 2-	1	1	1
TMDS DATA 2+	2	2	2
TMDS DATA 2 SHIELD	3	3	3
DDC CLOCK	6	6	6
DDC DATA	7	7	7
TMDS DATA 1-	9	9	9
TMDS DATA 1+	10	10	10
TMDS DATA 1 SHIELD	11	11	11
POWER +5V	14	14	14
GROUND	15	15	15
(+5V & HV SYNC.)			
HOT PLUG DETECT	16	16	16
TMDS DATA 0-	17	17	17
TMDS DATA 0+	18	18	18
TMDS DATA 0 SHIELD	19	19	19
TMDS CLOCK SHIELD	22	22	22
TMDS CLOCK+	23	23	23
TMDS CLOCK-	24	24	24
SHELL	—	BRAID	—
		SHELL	

NOTE:

- THIS ITEM CONTAINS PAT. US 6,287,148 B1 RF-BLOK™ SHIELDING DESIGN.
- WIRE MARKING:

E193793 RU AWM 20276 80°C 30V VW-1

DVI SINGLE LINK DIGITAL SUPER LOW ATTENUATION CABLE (SLAC™)

UNIT: mm

CUSTOMER'S P/N	L±(mm)
AK3765	10000±200
AK3766	15000±250

ITEM	DESCRIPTION	QTY.	UNIT
1	DVI MALE CONNECTOR W/18 CONTACTS ONLY (18+1)	1	PCS.
2	DVI FEMALE CONNECTOR(18+0) C1-C5 NO PINS	1	PCS.
3	MOLDED BLACK COLOR PVC HOOD	2	PCS.
4	PAT.US 6,287,148 B1 RF-BLOK™ SHIELDING METAL CAN	2	PCS.
5	BLACK #4/40 THUMBSCREW	2	PCS.
6	#4/40 HEXNUT	2	PCS.
7	(100Ω SHIELDED TMDS TWISTED PAIRS)x4+5C+AL-FOIL+ BRAID OVERALL;BLACK COLOR PVC JACKET	SEE	DWG.

REVISED DETAILS

REV.	DESCRIPTION	DATE	REVISED BY
A	ADD WIRE SECTION VIEW	2011.09.08	Z.Q.KANG

Revision:

A

RFQ number:

Drawn by:

Checked by:

Scale:

None

Date:

06/21/2005

