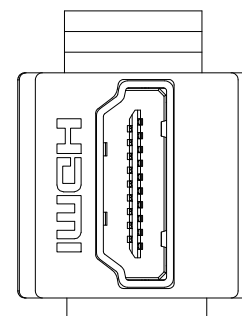
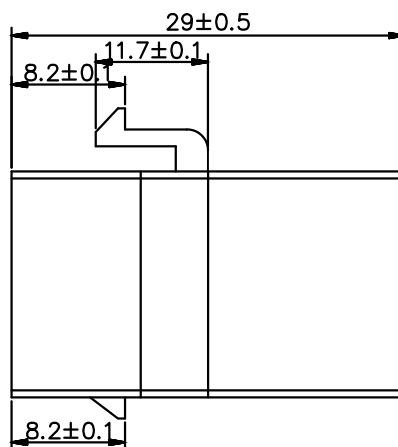


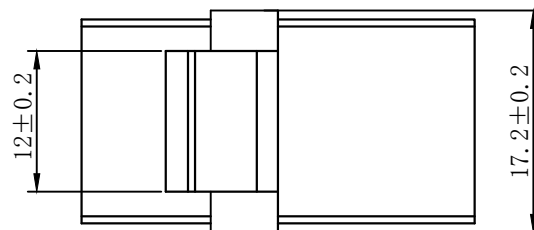
J1



J2

PIN OUT

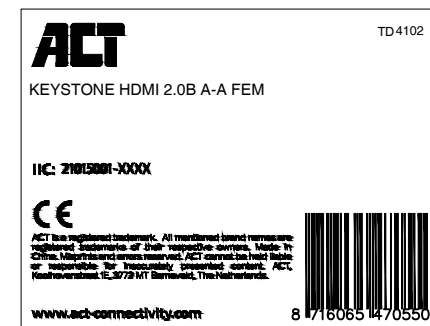
J1	J2	J1	J2
1	1	11	11
2	2	12	12
3	3	13	13
4	4	14	14
5	5	15	15
6	6	16	16
7	7	17	17
8	8	18	18
9	9	19	19
10	10	DRAIN	DRAIN



NOTES:

- Electrical test:
 - 100% open short & miss wire test;
 - Insulation resistance:DC 300V 10MΩ Min;
 - Contact resistance:3Ω Max;
- 3840×2160@60Hz resolution
- RoHS 3.0 and REACH Compliant
- Packing:1PCS/PE Bag+Label

ACT Label Polybag 80x60mm



MATERIAL LIST:

NO.	PARTS NAME	SPECIFICATION STANDARD	QT' Y	REMARK
②	SHELL	ABS/BLACK	1	
①	HDMI CONNECTER	HDMI A SOCKET SOLDER TYPE, BLACK INSULATION, THE PIN GOLD PLATED , THE SHELL GOLD PLATED	2	
		NEW	21. May. 2021	A
BY	CHK	REVISION RECORD MODIFICATIONS	DATE	REV.

"#":Matching DIM. "*":Important DIM. Others General DIM. GENERAL TOLERANCE OF DIMENSIONS X:XXX ±0.005 X:XX ±0.05 X:X ±0.1	DRAWING	21. May. 2021	Alvan	
	CHECK	21. May. 2021	Alvan	
	APPROVAL			
	SCALE	1/1 (A4)	UNIT	mm
	DRAWING NO.	Keystone for HDMI 2.0b Socket to Socket Adapter		DES. : 255313S
	DRAWING CLASSIFICATION			S SHEET 1 OF 1

